

CPEB3 Rabbit pAb

Catalog No.: A15402 **2 Publications**

Basic Information

Observed MW

75kDa/

Calculated MW

76kDa

Category

Primary antibody

Applications

WB,IHC-P,IF/ICC,ELISA

Cross-Reactivity

Human, Mouse, Rat

Background

Enables mRNA 3'-UTR binding activity and translation factor activity, RNA binding. Involved in cellular response to amino acid stimulus; negative regulation of transcription by RNA polymerase II; and positive regulation of mRNA catabolic process. Located in several cellular components, including cytosol; midbody; and nucleoplasm. Part of CCR4-NOT complex.

Recommended Dilutions

WB	1:200 - 1:2000
IHC-P	1:100 - 1:500
IF/ICC	1:50 - 1:200
ELISA	Recommended starting concentration is 1 µg/mL. Please optimize the concentration based on your specific assay requirements.

Immunogen Information

Gene ID

22849

Swiss Prot

Q8NE35

Immunogen

Recombinant protein (or fragment). This information is considered to be commercially sensitive.

Synonyms

CPEB3

Contact

☎	400-999-6126
✉	cn.market@abclonal.com.cn
🌐	www.abclonal.com.cn

Product Information

Source

Rabbit

Isotype

IgG

Purification

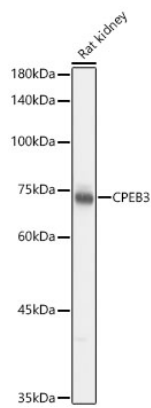
Affinity purification

Storage

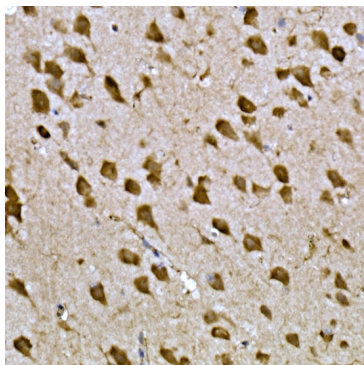
Store at -20°C. Avoid freeze / thaw cycles.

Buffer: PBS with 0.05% proclin300, 50% glycerol, pH7.3.

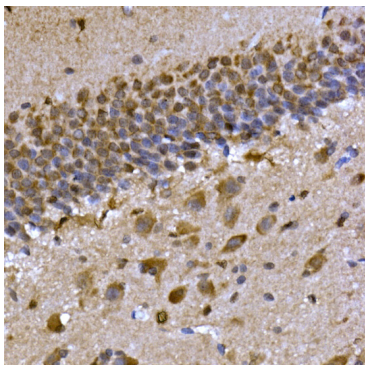
Validation Data



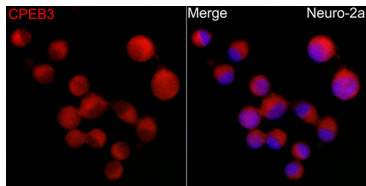
Western blot analysis of lysates from Rat kidney using CPEB3 Rabbit pAb (A15402) at 1:1000 dilution. Secondary antibody: HRP-conjugated Goat anti-Rabbit IgG (H+L) (AS014) at 1:10000 dilution. Lysates/proteins: 25 µg per lane. Blocking buffer: 3% nonfat dry milk in TBST. Detection: ECL Basic Kit (RM00020). Exposure time: 1s.



Immunohistochemistry analysis of paraffin-embedded Mouse brain tissue using CPEB3 Rabbit pAb (A15402) at a dilution of 1:300 (40x lens). High pressure antigen retrieval performed with 0.01M Citrate buffer (pH 6.0) prior to IHC staining.



Immunohistochemistry analysis of paraffin-embedded Rat brain tissue using CPEB3 Rabbit pAb (A15402) at a dilution of 1:300 (40x lens). High pressure antigen retrieval performed with 0.01M Citrate buffer (pH 6.0) prior to IHC staining.



Immunofluorescence analysis of Neuro-2a cells using CPEB3 Rabbit pAb (A15402) at dilution of 1:200 (40x lens). Secondary antibody: Cy3-conjugated Goat anti-Rabbit IgG (H+L) (AS007) at 1:500 dilution. Blue: DAPI for nuclear staining.