

CLSTN1 Rabbit pAb

Catalog No.: A15405

Basic Information

Observed MW

110kDa

Calculated MW

110kDa

Category

Primary antibody

Applications

ELISA, WB

Cross-Reactivity

Mouse, Rat

Background

This gene is a member of the calyntenin family, a subset of the cadherin superfamily. The encoded transmembrane protein, also known as alcadin-alpha, is thought to bind to kinesin-1 motors to mediate the axonal anterograde transport of certain types of vesicle. Amyloid precursor protein (APP) is trafficked via these vesicles and so this protein is being investigated to see how it might contribute to the mechanisms underlying Alzheimer's disease. Alternative splicing results in multiple transcript variants.

Recommended Dilutions

WB 1:200 - 1:2000

Immunogen Information

Gene ID

22883

Swiss Prot

O94985

Immunogen

Recombinant fusion protein containing a sequence corresponding to amino acids 29-350 of human CLSTN1 (NP_055759.3).

Synonyms

CST-1; CSTN1; CDHR12; PIK3CD; ALC-ALPHA; XB31alpha; alalpha1; alalpha2; CLSTN1

Contact

☎ | 400-999-6126

✉ | cn.market@abclonal.com.cn

🌐 | www.abclonal.com.cn

Product Information

Source

Rabbit

Isotype

IgG

Purification

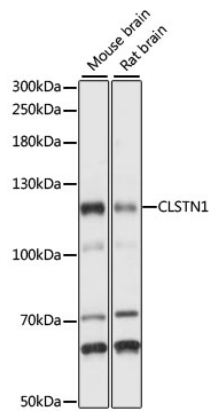
Affinity purification

Storage

Store at -20°C. Avoid freeze / thaw cycles.

Buffer: PBS with 0.01% thimerosal, 50% glycerol, pH7.3.

Validation Data



Western blot analysis of various lysates using CLSTN1 Rabbit pAb (A15405) at 1:1000 dilution.
Secondary antibody: HRP Goat Anti-Rabbit IgG (H+L) (AS014) at 1:10000 dilution.
Lysates/proteins: 25µg per lane.
Blocking buffer: 3% nonfat dry milk in TBST.
Detection: ECL Basic Kit (RM00020).
Exposure time: 1s.