

# ESYT1 Rabbit pAb

Catalog No.: A15410

## Basic Information

### Observed MW

123kDa

### Calculated MW

123kDa

### Category

Primary antibody

### Applications

ELISA, WB, IF/ICC

### Cross-Reactivity

Human, Mouse, Rat

## Background

Enables identical protein binding activity. Predicted to be involved in endoplasmic reticulum-plasma membrane tethering and lipid transport. Located in endoplasmic reticulum. Is integral component of endoplasmic reticulum membrane.

## Recommended Dilutions

WB	1:200 - 1:2000
IF/ICC	1:50 - 1:200

## Immunogen Information

### Gene ID

23344

### Swiss Prot

Q9BSJ8

### Immunogen

Recombinant fusion protein containing a sequence corresponding to amino acids 90-220 of human ESYT1 (NP\_056107.1).

### Synonyms

MBC2; FAM62A; ESYT1

## Contact

 | 400-999-6126

 | [cn.market@abclonal.com.cn](mailto:cn.market@abclonal.com.cn)

 | [www.abclonal.com.cn](http://www.abclonal.com.cn)

## Product Information

### Source

Rabbit

### Isotype

IgG

### Purification

Affinity purification

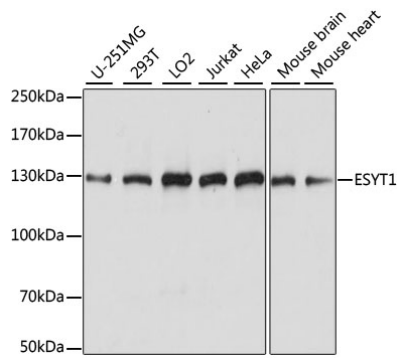
### Storage

Store at -20°C. Avoid freeze / thaw cycles.

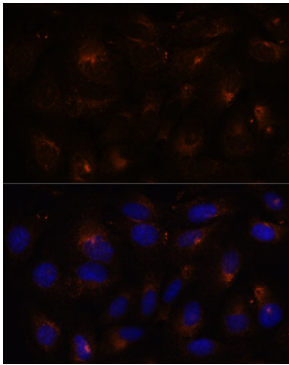
Buffer: PBS with 0.01% thimerosal, 50% glycerol, pH7.3.

## Validation Data

---



Western blot analysis of various lysates using ESYT1 Rabbit pAb (A15410) at 1:1000 dilution.  
Secondary antibody: HRP Goat Anti-Rabbit IgG (H+L) (AS014) at 1:10000 dilution.  
Lysates/proteins: 25µg per lane.  
Blocking buffer: 3% nonfat dry milk in TBST.  
Detection: ECL Basic Kit (RM00020).  
Exposure time: 5s.



Immunofluorescence analysis of U-2 OS cells using ESYT1 Rabbit pAb (A15410) at dilution of 1:100. Secondary antibody: Cy3 Goat Anti-Rabbit IgG (H+L) (AS007) at 1:500 dilution. Blue: DAPI for nuclear staining.