

CRTC1 Rabbit pAb

Catalog No.: A15412

Basic Information

Observed MW

80kDa

Calculated MW

67kDa

Category

Primary antibody

Applications

ELISA, WB

Cross-Reactivity

Mouse, Rat

Background

Enables cAMP response element binding protein binding activity. Involved in positive regulation of transcription by RNA polymerase II. Located in cytosol; nuclear body; and plasma membrane.

Recommended Dilutions

WB 1:200 - 1:2000

Immunogen Information

Gene ID

23373

Swiss Prot

Q6UUV9

Immunogen

Recombinant fusion protein containing a sequence corresponding to amino acids 1-200 of human CRTC1 (NP_056136.2).

Synonyms

MAML2; MECT1; Mam-2; TORC1; TORC-1; WAMTP1; CRTC1

Contact

 | 400-999-6126

 | cn.market@abclonal.com.cn

 | www.abclonal.com.cn

Product Information

Source

Rabbit

Isotype

IgG

Purification

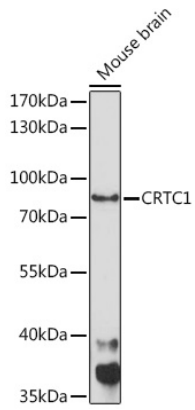
Affinity purification

Storage

Store at -20°C. Avoid freeze / thaw cycles.

Buffer: PBS with 0.01% thimerosal, 50% glycerol, pH7.3.

Validation Data



Western blot analysis of lysates from Mouse brain, using CRTC1 Rabbit pAb (A15412) at 1:1000 dilution.
Secondary antibody: HRP Goat Anti-Rabbit IgG (H+L) (AS014) at 1:10000 dilution.
Lysates/proteins: 25µg per lane.
Blocking buffer: 3% nonfat dry milk in TBST.
Detection: ECL Enhanced Kit (RM00021).
Exposure time: 90s.