

SLC44A1 Rabbit pAb

Catalog No.: A15413

Basic Information

Observed MW

80kDa

Calculated MW

73kDa

Category

Primary antibody

Applications

WB, ELISA

Cross-Reactivity

Human, Mouse, Rat

Background

Enables choline transmembrane transporter activity. Involved in choline transport and transmembrane transport. Located in several cellular components, including cytosol; mitochondrion; and nucleoplasm. Implicated in high grade glioma.

Recommended Dilutions

WB 1:200 - 1:2000

ELISA Recommended starting concentration is 1 µg/mL. Please optimize the concentration based on your specific assay requirements.

Immunogen Information

Gene ID

23446

Swiss Prot

Q8WWI5

Immunogen

Recombinant protein (or fragment). This information is considered to be commercially sensitive.

Synonyms

CD92; CTL1; CDW92; CHTL1; CONATOC; SLC44A1

Contact

 | 400-999-6126

 | cn.market@abclonal.com.cn

 | www.abclonal.com.cn

Product Information

Source

Rabbit

Isotype

IgG

Purification

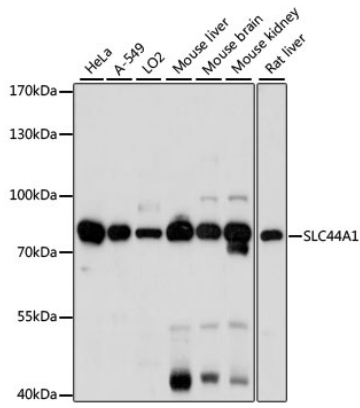
Affinity purification

Storage

Store at -20°C. Avoid freeze / thaw cycles.

Buffer: PBS with 0.01% thimerosal, 50% glycerol, pH 7.3.

Validation Data



Western blot analysis of various lysates using SLC44A1 Rabbit pAb (A15413) at 1:1000 dilution.
Secondary antibody: HRP-conjugated Goat anti-Rabbit IgG (H+L) (AS014) at 1:10000 dilution.
Lysates/proteins: 25 μ g per lane.
Blocking buffer: 3% nonfat dry milk in TBST.
Detection: ECL Basic Kit (RM00020).
Exposure time: 30s.