

SRPX2 Rabbit pAb

Catalog No.: A15434

Basic Information

Observed MW

53kDa

Calculated MW

53kDa

Category

Primary antibody

Applications

ELISA, WB

Cross-Reactivity

Mouse

Background

This gene encodes a secreted protein that contains three sushi repeat motifs. The encoded protein may play a role in the development of speech and language centers in the brain. This protein may also be involved in angiogenesis. Mutations in this gene are the cause of bilateral perisylvian polymicrogyria, rolandic epilepsy, speech dyspraxia and cognitive disability.

Recommended Dilutions

WB 1:200 - 1:2000

Immunogen Information

Gene ID

27286

Swiss Prot

O60687

Immunogen

Recombinant fusion protein containing a sequence corresponding to amino acids 166-465 of human SRPX2 (NP_055282.1).

Synonyms

BPP; CBPS; PMGX; RESDX; SRPUL; SRPX2

Contact

 | 400-999-6126

 | cn.market@abclonal.com.cn

 | www.abclonal.com.cn

Product Information

Source

Rabbit

Isotype

IgG

Purification

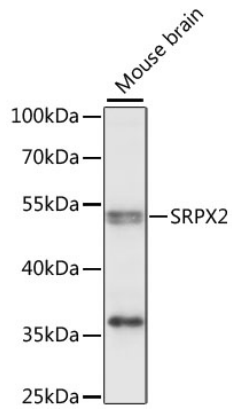
Affinity purification

Storage

Store at -20°C. Avoid freeze / thaw cycles.

Buffer: PBS with 0.01% thimerosal, 50% glycerol, pH 7.3.

Validation Data



Western blot analysis of lysates from mouse brain, using SRPX2 Rabbit pAb (A15434) at 1:1000 dilution.
Secondary antibody: HRP Goat Anti-Rabbit IgG (H+L) (AS014) at 1:10000 dilution.
Lysates/proteins: 25µg per lane.
Blocking buffer: 3% nonfat dry milk in TBST.
Detection: ECL Enhanced Kit (RM00021).
Exposure time: 10s.