

# ADAMDEC1 Rabbit pAb

Catalog No.: A15435

## Basic Information

### Observed MW

42-50kDa

### Calculated MW

53kDa

### Category

Primary antibody

### Applications

ELISA, WB

### Cross-Reactivity

Human

## Background

This encoded protein is thought to be a secreted protein belonging to the disintegrin metalloproteinase family. Its expression is upregulated during dendritic cells maturation. This protein may play an important role in dendritic cell function and their interactions with germinal center T cells.

## Recommended Dilutions

WB 1:200 - 1:2000

## Immunogen Information

### Gene ID

27299

### Swiss Prot

O15204


### Immunogen

Recombinant fusion protein containing a sequence corresponding to amino acids 206-470 of human ADAMDEC1 (NP\_055294.1).

### Synonyms

M12.219; ADAMDEC1

## Contact

 | 400-999-6126

 | [cn.market@abclonal.com.cn](mailto:cn.market@abclonal.com.cn)

 | [www.abclonal.com.cn](http://www.abclonal.com.cn)

## Product Information

### Source

Rabbit

### Isotype

IgG

### Purification

Affinity purification

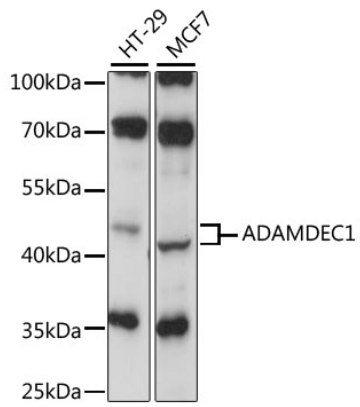
### Storage

Store at -20°C. Avoid freeze / thaw cycles.

Buffer: PBS with 0.01% thimerosal, 50% glycerol, pH7.3.

## Validation Data

---



Western blot analysis of various lysates using ADAMDEC1 Rabbit pAb (A15435) at 1:1000 dilution.  
Secondary antibody: HRP Goat Anti-Rabbit IgG (H+L) (AS014) at 1:10000 dilution.  
Lysates/proteins: 25µg per lane.  
Blocking buffer: 3% nonfat dry milk in TBST.  
Detection: ECL Basic Kit (RM00020).  
Exposure time: 30s.