

# SDF4 Rabbit pAb

Catalog No.: A15443

## Basic Information

### Observed MW

40kDa

### Calculated MW

42kDa

### Category

Primary antibody

### Applications

WB,IHC-P,ELISA

### Cross-Reactivity

Human, Mouse

## Background

This gene encodes a stromal cell derived factor that is a member of the CREC protein family. The encoded protein contains six EF-hand motifs and calcium-binding motifs. This protein localizes to the Golgi lumen and may be involved in regulating calcium dependent cellular activities.

## Recommended Dilutions

**WB** 1:200 - 1:2000

**IHC-P** 1:50 - 1:200

**ELISA** Recommended starting concentration is 1 µg/mL. Please optimize the concentration based on your specific assay requirements.

## Immunogen Information

### Gene ID

51150

### Swiss Prot

Q9BRK5

### Immunogen

Recombinant protein (or fragment). This information is considered to be commercially sensitive.

### Synonyms

Cab45; SDF-4; SDF4

## Contact

 | 400-999-6126

 | [cn.market@abclonal.com.cn](mailto:cn.market@abclonal.com.cn)

 | [www.abclonal.com.cn](http://www.abclonal.com.cn)

## Product Information

### Source

Rabbit

### Isotype

IgG

### Purification

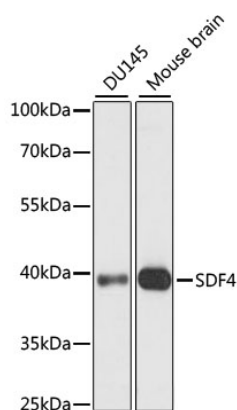
Affinity purification

### Storage

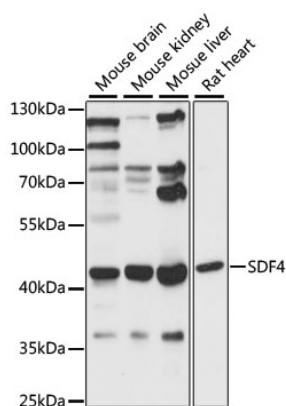
Store at -20°C. Avoid freeze / thaw cycles.

Buffer: PBS with 0.01% thimerosal, 50% glycerol, pH7.3.

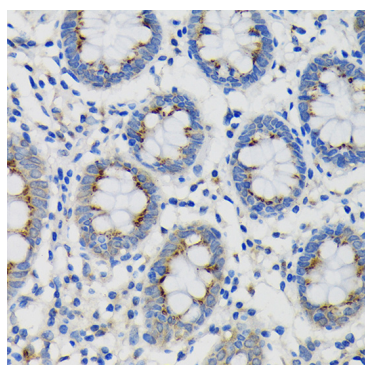
## Validation Data



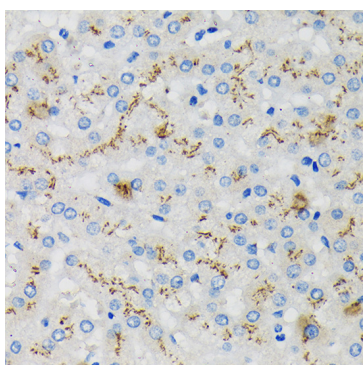
Western blot analysis of various lysates using SDF4 Rabbit pAb (A15443) at 1:1000 dilution.  
Secondary antibody: HRP-conjugated Goat anti-Rabbit IgG (H+L) (AS014) at 1:10000 dilution.  
Lysates/proteins: 25µg per lane.  
Blocking buffer: 3% nonfat dry milk in TBST.  
Detection: ECL Basic Kit (RM00020).  
Exposure time: 90s.



Western blot analysis of various lysates using SDF4 Rabbit pAb (A15443) at 1:1000 dilution.  
Secondary antibody: HRP-conjugated Goat anti-Rabbit IgG (H+L) (AS014) at 1:10000 dilution.  
Lysates/proteins: 25µg per lane.  
Blocking buffer: 3% nonfat dry milk in TBST.  
Detection: ECL Basic Kit (RM00020).  
Exposure time: 60s.



Immunohistochemistry analysis of paraffin-embedded Human colon using SDF4 Rabbit pAb (A15443) at dilution of 1:100 (40x lens).  
Microwave antigen retrieval performed with 0.01M PBS Buffer (pH 7.2) prior to IHC staining.



Immunohistochemistry analysis of paraffin-embedded Human liver using SDF4 Rabbit pAb (A15443) at dilution of 1:100 (40x lens).  
Microwave antigen retrieval performed with 0.01M PBS Buffer (pH 7.2) prior to IHC staining.