

PIGP Rabbit pAb

Catalog No.: A15446

Basic Information

Observed MW

22kDa

Calculated MW

18kDa

Category

Primary antibody

Applications

WB, ELISA

Cross-Reactivity

Mouse

Background

This gene encodes an enzyme involved in the first step of glycosylphosphatidylinositol (GPI)-anchor biosynthesis. The GPI-anchor is a glycolipid found on many blood cells that serves to anchor proteins to the cell surface. The encoded protein is a component of the GPI-N-acetylglucosaminyltransferase complex that catalyzes the transfer of N-acetylglucosamine (GlcNAc) from UDP-GlcNAc to phosphatidylinositol (PI). This gene is located in the Down Syndrome critical region on chromosome 21 and is a candidate for the pathogenesis of Down syndrome. This gene has multiple pseudogenes and is a member of the phosphatidylinositol glycan anchor biosynthesis gene family. Alternatively spliced transcript variants encoding different isoforms have been described.

Recommended Dilutions

WB 1:200 - 1:2000

ELISA Recommended starting concentration is 1 µg/mL. Please optimize the concentration based on your specific assay requirements.

Immunogen Information

Gene ID

51227

Swiss Prot

P57054

Immunogen

Recombinant protein (or fragment). This information is considered to be commercially sensitive.

Synonyms

DCRC; DSRC; DEE55; DSCR5; PIG-P; DCRC-S; EIEE55; PIGP

Contact

☎ | 400-999-6126

✉ | cn.market@abclonal.com.cn

🌐 | www.abclonal.com.cn

Product Information

Source

Rabbit

Isotype

IgG

Purification

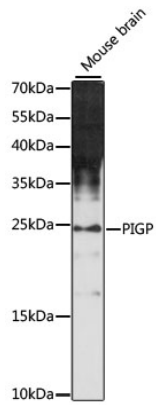
Affinity purification

Storage

Store at -20°C. Avoid freeze / thaw cycles.

Buffer: PBS with 0.01% thimerosal, 50% glycerol, pH7.3.

Validation Data



Western blot analysis of lysates from mouse brain, using PIGP Rabbit pAb (A15446) at 1:1000 dilution.
Secondary antibody: HRP-conjugated Goat anti-Rabbit IgG (H+L) (AS014) at 1:10000 dilution.
Lysates/proteins: 25 μ g per lane.
Blocking buffer: 3% nonfat dry milk in TBST.
Detection: ECL Enhanced Kit (RM00021).
Exposure time: 90s.