

ANAPC11 Rabbit pAb

Catalog No.: A15449

Basic Information

Observed MW

12kDa

Calculated MW

10kDa

Category

Primary antibody

Applications

ELISA, WB, IHC-P, IF/ICC

Cross-Reactivity

Human, Mouse

Background

Enables cullin family protein binding activity and ubiquitin-ubiquitin ligase activity. Contributes to ubiquitin-protein transferase activity. Involved in protein K11-linked ubiquitination. Located in nucleolus and nucleoplasm. Part of anaphase-promoting complex.

Recommended Dilutions

WB	1:200 - 1:2000
IHC-P	1:50 - 1:200
IF/ICC	1:50 - 1:200

Immunogen Information

Gene ID

51529

Swiss Prot

Q9NYG5

Immunogen

Recombinant fusion protein containing a sequence corresponding to amino acids 1-84 of human ANAPC11 (NP_001002245.1).

Synonyms

APC11; Apc11p; HSPC214; ANAPC11

Contact

☎ | 400-999-6126

✉ | cn.market@abclonal.com.cn

🌐 | www.abclonal.com.cn

Product Information

Source

Rabbit

Isotype

IgG

Purification

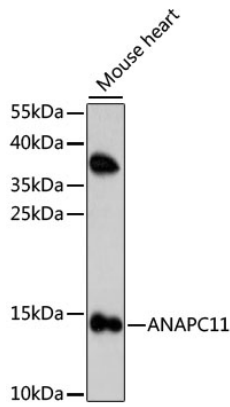
Affinity purification

Storage

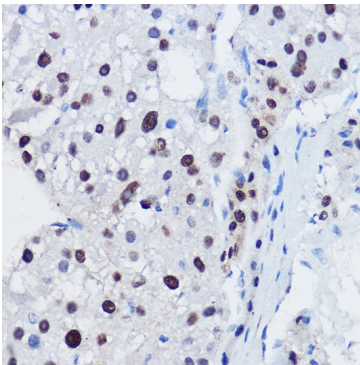
Store at -20°C. Avoid freeze / thaw cycles.

Buffer: PBS with 0.01% thimerosal, 50% glycerol, pH7.3.

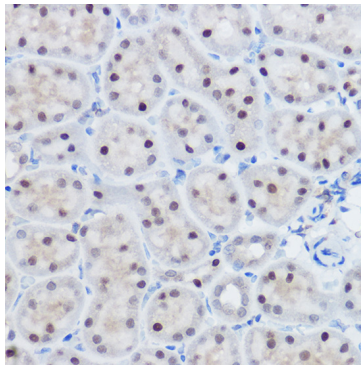
Validation Data



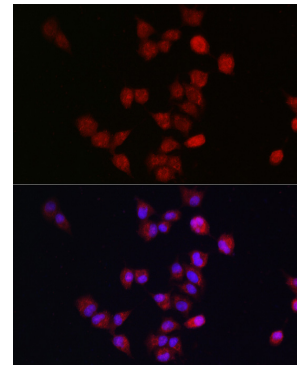
Western blot analysis of lysates from mouse heart, using ANAPC11 Rabbit pAb (A15449) at 1:1000 dilution.
Secondary antibody: HRP Goat Anti-Rabbit IgG (H+L) (AS014) at 1:10000 dilution.
Lysates/proteins: 25µg per lane.
Blocking buffer: 3% nonfat dry milk in TBST.
Detection: ECL Enhanced Kit (RM00021).
Exposure time: 120s.



Immunohistochemistry analysis of paraffin-embedded human liver cancer using ANAPC11 Rabbit pAb (A15449) at dilution of 1:100 (40x lens). Perform high pressure antigen retrieval with 10 mM citrate buffer pH 6.0 before commencing with IHC staining protocol.



Immunohistochemistry analysis of paraffin-embedded mouse kidney using ANAPC11 Rabbit pAb (A15449) at dilution of 1:100 (40x lens). Perform high pressure antigen retrieval with 10 mM citrate buffer pH 6.0 before commencing with IHC staining protocol.



Immunofluorescence analysis of A-549 cells using ANAPC11 Rabbit pAb (A15449) at dilution of 1:300. Secondary antibody: Cy3 Goat Anti-Rabbit IgG (H+L) (AS007) at 1:500 dilution. Blue: DAPI for nuclear staining.