

LINS1 Rabbit pAb

Catalog No.: A15465

Basic Information

Observed MW

50kDa

Calculated MW

86kDa

Category

Primary antibody

Applications

ELISA, WB

Cross-Reactivity

Human, Mouse, Rat

Background

The Drosophila segment polarity gene *lin* encodes a protein, *lines*, which plays important roles in development of the epidermis and hindgut. This gene encodes a protein containing a *lines*-like domain. This gene is located on chromosome 15 and clustered with the gene encoding ankyrin repeat and SOCS box-containing protein 7. Alternative splicing results in multiple transcript variants.

Recommended Dilutions

WB 1:200 - 1:2000

Immunogen Information

Gene ID

55180

Swiss Prot

Q8NG48

Immunogen

Recombinant fusion protein containing a sequence corresponding to amino acids 541-700 of human LINS1 (NP_001035706.1).

Synonyms

LINS; MRT27; WINS1; LINS1

Contact

 | 400-999-6126

 | cn.market@abclonal.com.cn

 | www.abclonal.com.cn

Product Information

Source

Rabbit

Isotype

IgG

Purification

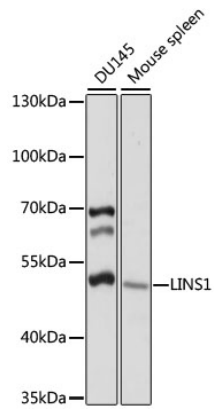
Affinity purification

Storage

Store at -20°C. Avoid freeze / thaw cycles.

Buffer: PBS with 0.01% thimerosal, 50% glycerol, pH7.3.

Validation Data



Western blot analysis of various lysates using LINS1 Rabbit pAb (A15465) at 1:1000 dilution.
Secondary antibody: HRP Goat Anti-Rabbit IgG (H+L) (AS014) at 1:10000 dilution.
Lysates/proteins: 25 μ g per lane.
Blocking buffer: 3% nonfat dry milk in TBST.
Detection: ECL Basic Kit (RM00020).
Exposure time: 10s.