

PGM2 Rabbit pAb

Catalog No.: A15467

Basic Information

Observed MW

70kDa

Calculated MW

68kDa

Category

Primary antibody

Applications

ELISA, WB

Cross-Reactivity

Human, Mouse

Background

Enables phosphopentomutase activity. Predicted to be involved in carbohydrate metabolic process and deoxyribose phosphate catabolic process. Predicted to act upstream of or within glucose metabolic process. Located in extracellular exosome.

Recommended Dilutions

WB 1:200 - 1:2000

Immunogen Information

Gene ID

55276

Swiss Prot

Q96G03

Immunogen

Recombinant fusion protein containing a sequence corresponding to amino acids 1-130 of human PGM2 (NP_060760.2).

Synonyms

MSTP006; PGM2

Contact

☎ | 400-999-6126

✉ | cn.market@abclonal.com.cn

🌐 | www.abclonal.com.cn

Product Information

Source

Rabbit

Isotype

IgG

Purification

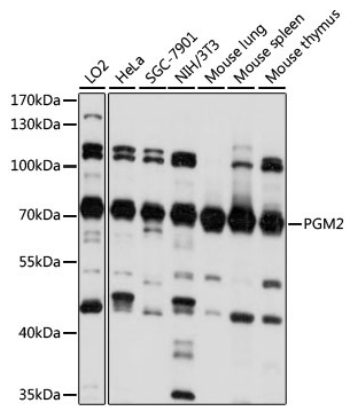
Affinity purification

Storage

Store at -20°C. Avoid freeze / thaw cycles.

Buffer: PBS with 0.01% thimerosal, 50% glycerol, pH7.3.

Validation Data



Western blot analysis of various lysates using PGM2 Rabbit pAb (A15467) at 1:1000 dilution.
Secondary antibody: HRP Goat Anti-Rabbit IgG (H+L) (AS014) at 1:10000 dilution.
Lysates/proteins: 25µg per lane.
Blocking buffer: 3% nonfat dry milk in TBST.
Detection: ECL Basic Kit (RM00020).
Exposure time: 10s.