

# MFN1 Rabbit pAb

Catalog No.: A15474 **4 Publications**

## Basic Information

### Observed MW

84kDa

### Calculated MW

83kDa

### Category

Primary antibody

### Applications

ELISA, WB

### Cross-Reactivity

Human, Mouse, Rat

## Background

Predicted to enable GTPase activity and identical protein binding activity. Involved in mitochondrial fusion and positive regulation of mitochondrial membrane potential. Located in mitochondrion. Is expressed in embryo; heart; and placenta. Orthologous to human MFN1 (mitofusin 1).

## Recommended Dilutions

WB 1:100 - 1:500

## Immunogen Information

### Gene ID

67414

### Swiss Prot

### Immunogen

A synthetic peptide corresponding to a sequence within amino acids 1-100 of mouse MFN1 (NP\_077162.2).

### Synonyms

HR2; mKIAA4032; D3Ert265e; 2310002F04Rik; 6330416C07Rik; MFN1

## Contact

☎ | 400-999-6126

✉ | [cn.market@abclonal.com.cn](mailto:cn.market@abclonal.com.cn)

🌐 | [www.abclonal.com.cn](http://www.abclonal.com.cn)

## Product Information

### Source

Rabbit

### Isotype

IgG

### Purification

Affinity purification

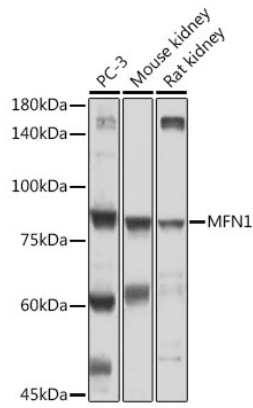
### Storage

Store at -20°C. Avoid freeze / thaw cycles.

Buffer: PBS with 0.02% sodium azide, 50% glycerol, pH 7.3.

## Validation Data

---



Western blot analysis of various lysates using MFN1 Rabbit pAb (A15474) at 1:500 dilution.  
Secondary antibody: HRP Goat Anti-Rabbit IgG (H+L) (AS014) at 1:10000 dilution.  
Lysates/proteins: 25µg per lane.  
Blocking buffer: 3% nonfat dry milk in TBST.  
Detection: ECL Basic Kit (RM00020).  
Exposure time: 60s.