

LTB4R2 Rabbit pAb

Catalog No.: A15479 **1 Publications**

Basic Information

Observed MW

43kDa

Calculated MW

38kDa

Category

Primary antibody

Applications

ELISA, WB

Cross-Reactivity

Human, Mouse, Rat

Background

Predicted to enable G protein-coupled peptide receptor activity and leukotriene B4 receptor activity. Predicted to be involved in inflammatory response and neuropeptide signaling pathway. Predicted to act upstream of or within keratinocyte migration and signal transduction. Located in nucleoplasm and plasma membrane.

Recommended Dilutions

WB 1:200 - 1:2000

Immunogen Information

Gene ID

56413

Swiss Prot

Q9NPC1

Immunogen

Recombinant fusion protein containing a sequence corresponding to amino acids 254-358 of human LTB4R2 (NP_062813.2).

Synonyms

BLT2; NOP9; BLTR2; JULF2; KPG_004; LTB4-R2; LTB4-R 2; LTB4R2

Contact

☎ | 400-999-6126

✉ | cn.market@abclonal.com.cn

🌐 | www.abclonal.com.cn

Product Information

Source

Rabbit

Isotype

IgG

Purification

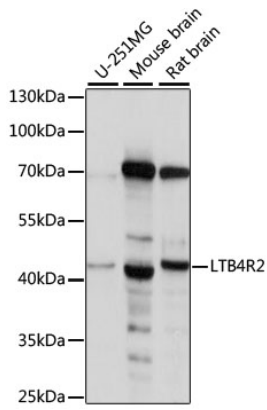
Affinity purification

Storage

Store at -20°C. Avoid freeze / thaw cycles.

Buffer: PBS with 0.01% thimerosal, 50% glycerol, pH7.3.

Validation Data



Western blot analysis of various lysates using LTB4R2 Rabbit pAb (A15479).
Secondary antibody: HRP Goat Anti-Rabbit IgG (H+L) (AS014) at 1:10000 dilution.
Lysates/proteins: 25µg per lane.
Blocking buffer: 3% nonfat dry milk in TBST.
Detection: ECL Basic Kit (RM00020).
Exposure time: 10s.