

# LRRC4C Rabbit pAb

Catalog No.: A15491

## Basic Information

### Observed MW

72kDa

### Calculated MW

72kDa

### Category

Primary antibody

### Applications

ELISA, WB

### Cross-Reactivity

Rat

## Background

NGL1 is a specific binding partner for netrin G1 (NTNG1; MIM 608818), which is a member of the netrin family of axon guidance molecules (Lin et al., 2003 [PubMed 14595443]).

## Recommended Dilutions

WB 1:200 - 1:2000

## Immunogen Information

### Gene ID

57689

### Swiss Prot

Q9HCJ2

### Immunogen

Recombinant fusion protein containing a sequence corresponding to amino acids 450-520 of human LRRC4C (NP\_065980.1).

### Synonyms

NGL1; NGL-1; LRRC4C

## Contact

☎ | 400-999-6126

✉ | [cn.market@abclonal.com.cn](mailto:cn.market@abclonal.com.cn)

🌐 | [www.abclonal.com.cn](http://www.abclonal.com.cn)

## Product Information

### Source

Rabbit

### Isotype

IgG

### Purification

Affinity purification

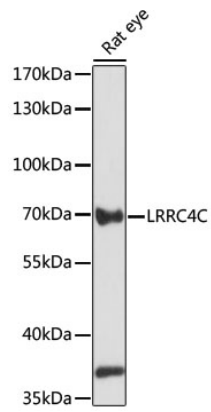
### Storage

Store at -20°C. Avoid freeze / thaw cycles.

Buffer: PBS with 0.01% thimerosal, 50% glycerol, pH 7.3.

## Validation Data

---



Western blot analysis of lysates from rat eye, using LRRC4C Rabbit pAb (A15491) at 1:1000 dilution.  
Secondary antibody: HRP Goat Anti-Rabbit IgG (H+L) (AS014) at 1:10000 dilution.  
Lysates/proteins: 25µg per lane.  
Blocking buffer: 3% nonfat dry milk in TBST.  
Detection: ECL Basic Kit (RM00020).  
Exposure time: 60s.