

# MS4A7 Rabbit pAb

Catalog No.: A15495

## Basic Information

### Observed MW

26kDa

### Calculated MW

26kDa

### Category

Primary antibody

### Applications

ELISA, WB

### Cross-Reactivity

Mouse

## Background

This gene encodes a member of the membrane-spanning 4A gene family, members of which are characterized by common structural features and similar intron/exon splice boundaries and display unique expression patterns in hematopoietic cells and nonlymphoid tissues. This family member is associated with mature cellular function in the monocytic lineage, and it may be a component of a receptor complex involved in signal transduction. This gene is localized to 11q12, in a cluster of other family members. At least four alternatively spliced transcript variants encoding two distinct isoforms have been observed.

## Recommended Dilutions

WB 1:200 - 1:2000

## Immunogen Information

### Gene ID

58475

### Swiss Prot

Q9GZW8

### Immunogen

A synthetic peptide corresponding to a sequence within amino acids 100-200 of human MS4A7 (NP\_067024.1).

### Synonyms

CFFM4; MS4A8; 4SPAN2; CD20L4; MS4A7

## Contact

 | 400-999-6126

 | [cn.market@abclonal.com.cn](mailto:cn.market@abclonal.com.cn)

 | [www.abclonal.com.cn](http://www.abclonal.com.cn)

## Product Information

### Source

Rabbit

### Isotype

IgG

### Purification

Affinity purification

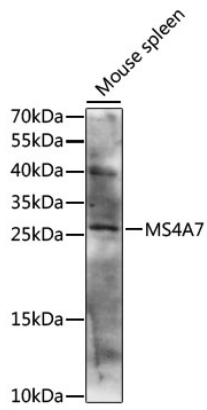
### Storage

Store at -20°C. Avoid freeze / thaw cycles.

Buffer: PBS with 0.01% thimerosal, 50% glycerol, pH 7.3.

## Validation Data

---



Western blot analysis of lysates from mouse spleen, using MS4A7 Rabbit pAb (A15495) at 1:1000 dilution.  
Secondary antibody: HRP Goat Anti-Rabbit IgG (H+L) (AS014) at 1:10000 dilution.  
Lysates/proteins: 25µg per lane.  
Blocking buffer: 3% nonfat dry milk in TBST.  
Detection: ECL Basic Kit (RM00020).  
Exposure time: 10s.