

MIS12 Rabbit pAb

Catalog No.: A15508

Basic Information

Observed MW

24kDa

Calculated MW

24kDa

Category

Primary antibody

Applications

ELISA, WB

Cross-Reactivity

Human

Background

Involved in attachment of mitotic spindle microtubules to kinetochore and kinetochore assembly. Located in kinetochore and nucleus. Part of MIS12/MIND type complex.

Recommended Dilutions

WB 1:200 - 1:2000

Immunogen Information

Gene ID

79003

Swiss Prot

Q9H081

Immunogen

Recombinant fusion protein containing a sequence corresponding to amino acids 1-205 of human MIS12 (NP_076944.1).

Synonyms

MTW1; hMis12; KNTC2AP; 2510025F08Rik; MIS12

Contact

 | 400-999-6126

 | cn.market@abclonal.com.cn

 | www.abclonal.com.cn

Product Information

Source

Rabbit

Isotype

IgG

Purification

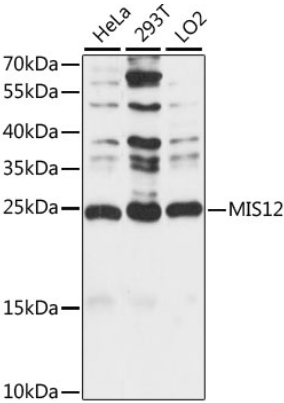
Affinity purification

Storage

Store at -20°C. Avoid freeze / thaw cycles.

Buffer: PBS with 0.01% thimerosal, 50% glycerol, pH7.3.

Validation Data



Western blot analysis of various lysates using MIS12 Rabbit pAb (A15508) at 1:1000 dilution.
Secondary antibody: HRP Goat Anti-Rabbit IgG (H+L) (AS014) at 1:10000 dilution.
Lysates/proteins: 25µg per lane.
Blocking buffer: 3% nonfat dry milk in TBST.
Detection: ECL Basic Kit (RM00020).
Exposure time: 30s.