

LLPH Rabbit pAb

Catalog No.: A15533

Basic Information

Observed MW

18kDa

Calculated MW

15kDa

Category

Primary antibody

Applications

ELISA, WB

Cross-Reactivity

Human, Rat

Background

Enables RNA binding activity. Predicted to be involved in dendrite extension and positive regulation of dendritic spine development. Located in chromosome and nucleolus.

Recommended Dilutions

WB 1:200 - 1:2000

Immunogen Information

Gene ID

84298

Swiss Prot

Q9BRT6

Immunogen

Recombinant fusion protein containing a sequence corresponding to amino acids 1-129 of human LLPH (NP_115714.1).

Synonyms

hLLP; C12orf31; LLPH

Contact

☎ | 400-999-6126

✉ | cn.market@abclonal.com.cn

🌐 | www.abclonal.com.cn

Product Information

Source

Rabbit

Isotype

IgG

Purification

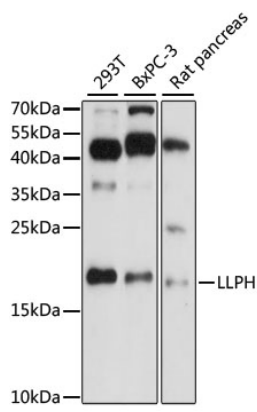
Affinity purification

Storage

Store at -20°C. Avoid freeze / thaw cycles.

Buffer: PBS with 0.01% thimerosal, 50% glycerol, pH7.3.

Validation Data



Western blot analysis of various lysates using LLPH Rabbit pAb (A15533) at 1:1000 dilution.
Secondary antibody: HRP Goat Anti-Rabbit IgG (H+L) (AS014) at 1:10000 dilution.
Lysates/proteins: 25µg per lane.
Blocking buffer: 3% nonfat dry milk in TBST.
Detection: ECL Basic Kit (RM00020).
Exposure time: 90s.