

MICALL1 Rabbit pAb

Catalog No.: A15541

Basic Information

Observed MW

95kDa

Calculated MW

93kDa

Category

Primary antibody

Applications

ELISA, WB

Cross-Reactivity

Mouse

Background

Enables identical protein binding activity; phosphatidic acid binding activity; and small GTPase binding activity. Involved in several processes, including plasma membrane tubulation; protein localization to endosome; and slow endocytic recycling. Located in late endosome and recycling endosome membrane. Is extrinsic component of membrane.

Recommended Dilutions

WB 1:200 - 1:2000

Immunogen Information

Gene ID

85377

Swiss Prot

Q8N3F8

Immunogen

Recombinant fusion protein containing a sequence corresponding to amino acids 614-863 of human MICALL1 (NP_203744.1).

Synonyms

MIRAB13; MICAL-L1; MICALL1

Contact

☎ | 400-999-6126

✉ | cn.market@abclonal.com.cn

🌐 | www.abclonal.com.cn

Product Information

Source

Rabbit

Isotype

IgG

Purification

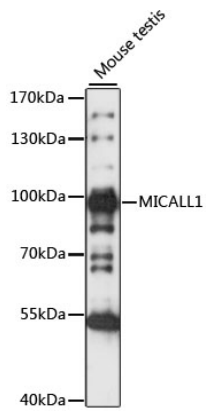
Affinity purification

Storage

Store at -20°C. Avoid freeze / thaw cycles.

Buffer: PBS with 0.01% thimerosal, 50% glycerol, pH7.3.

Validation Data



Western blot analysis of lysates from Mouse testis, using MICALL1 Rabbit pAb (A15541) at 1:1000 dilution.
Secondary antibody: HRP Goat Anti-Rabbit IgG (H+L) (AS014) at 1:10000 dilution.
Lysates/proteins: 25µg per lane.
Blocking buffer: 3% nonfat dry milk in TBST.
Detection: ECL Basic Kit (RM00020).
Exposure time: 30S.