

# DIXDC1 Rabbit pAb

Catalog No.: A15542

## Basic Information

### Observed MW

70kDa

### Calculated MW

77kDa

### Category

Primary antibody

### Applications

ELISA, WB

### Cross-Reactivity

Human

## Background

The protein encoded by this gene is a positive regulator of the Wnt signaling pathway. The encoded protein is found associated with gamma tubulin at the centrosome. Alternative splicing results in multiple transcript variants encoding different isoforms.

## Recommended Dilutions

WB 1:200 - 1:2000

## Immunogen Information

### Gene ID

85458

### Swiss Prot

Q155Q3

### Immunogen

Recombinant fusion protein containing a sequence corresponding to amino acids 173-472 of human DIXDC1 (NP\_219493.1).

### Synonyms

CCD1; DIXDC1

## Contact

☎ | 400-999-6126

✉ | [cn.market@abclonal.com.cn](mailto:cn.market@abclonal.com.cn)

🌐 | [www.abclonal.com.cn](http://www.abclonal.com.cn)

## Product Information

### Source

Rabbit

### Isotype

IgG

### Purification

Affinity purification

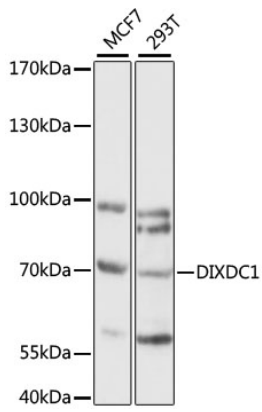
### Storage

Store at -20°C. Avoid freeze / thaw cycles.

Buffer: PBS with 0.01% thimerosal, 50% glycerol, pH7.3.

## Validation Data

---



Western blot analysis of various lysates using DIXDC1 Rabbit pAb (A15542) at 1:1000 dilution.  
Secondary antibody: HRP Goat Anti-Rabbit IgG (H+L) (AS014) at 1:10000 dilution.  
Lysates/proteins: 25µg per lane.  
Blocking buffer: 3% nonfat dry milk in TBST.  
Detection: ECL Basic Kit (RM00020).  
Exposure time: 60S.