

# TPD52L3 Rabbit pAb

Catalog No.: A15545

## Basic Information

### Observed MW

14kDa

### Calculated MW

16kDa

### Category

Primary antibody

### Applications

ELISA, WB, IF/ICC

### Cross-Reactivity

Mouse, Rat

## Background

This gene encodes a member of the tumor protein D52-like family of proteins. These proteins are characterized by an N-terminal coiled-coil motif that is used to form homo- and heteromeric complexes with other tumor protein D52-like proteins. The encoded protein may play a role in spermatogenesis. Alternative splicing results in multiple transcript variants.

## Recommended Dilutions

WB 1:200 - 1:2000

IF/ICC 1:50 - 1:200

## Immunogen Information

### Gene ID

89882

### Swiss Prot

Q96J77

### Immunogen

Recombinant fusion protein containing a sequence corresponding to amino acids 1-132 of human TPD52L3 (NP\_001001875.1).

### Synonyms

D55; hD55; TPD55; NYDSP25; TPD52L3

## Contact

☎ | 400-999-6126

✉ | [cn.market@abclonal.com.cn](mailto:cn.market@abclonal.com.cn)

🌐 | [www.abclonal.com.cn](http://www.abclonal.com.cn)

## Product Information

### Source

Rabbit

### Isotype

IgG

### Purification

Affinity purification

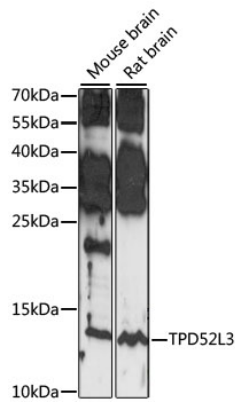
### Storage

Store at -20°C. Avoid freeze / thaw cycles.

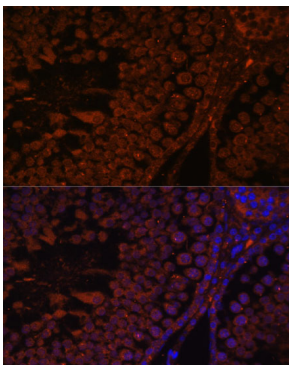
Buffer: PBS with 0.01% thimerosal, 50% glycerol, pH7.3.

## Validation Data

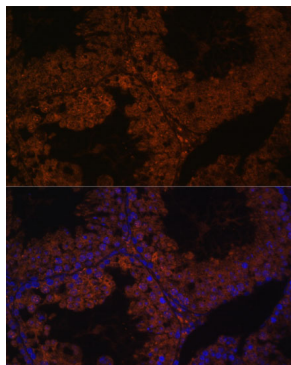
---



Western blot analysis of various lysates using TPD52L3 Rabbit pAb (A15545) at 1:1000 dilution.  
Secondary antibody: HRP Goat Anti-Rabbit IgG (H+L) (AS014) at 1:10000 dilution.  
Lysates/proteins: 25µg per lane.  
Blocking buffer: 3% nonfat dry milk in TBST.  
Detection: ECL Basic Kit (RM00020).  
Exposure time: 30S.



Immunofluorescence analysis of paraffin-embedded rat testis using TPD52L3 Rabbit pAb (A15545) at dilution of 1:100. Secondary antibody: Cy3 Goat Anti-Rabbit IgG (H+L) (AS007) at 1:500 dilution. Blue: DAPI for nuclear staining.



Immunofluorescence analysis of paraffin-embedded mouse testis using TPD52L3 Rabbit pAb (A15545) at dilution of 1:100. Secondary antibody: Cy3 Goat Anti-Rabbit IgG (H+L) (AS007) at 1:500 dilution. Blue: DAPI for nuclear staining.