

# SDSL Rabbit pAb

Catalog No.: A15554

## Basic Information

### Observed MW

35kDa

### Calculated MW

35kDa

### Category

Primary antibody

### Applications

ELISA, WB

### Cross-Reactivity

Mouse

## Background

Enables identical protein binding activity. Predicted to be involved in isoleucine biosynthetic process and threonine catabolic process. Predicted to be located in cytosol.

## Recommended Dilutions

WB 1:200 - 1:2000

## Immunogen Information

### Gene ID

113675

### Swiss Prot

Q96GA7

### Immunogen

Recombinant fusion protein containing a sequence corresponding to amino acids 1-137 of human SDSL (NP\_612441.1).

### Synonyms

TDH; cSDH; SDH 2; SDS-RS1; SDSL

## Contact

☎ | 400-999-6126

✉ | [cn.market@abclonal.com.cn](mailto:cn.market@abclonal.com.cn)

🌐 | [www.abclonal.com.cn](http://www.abclonal.com.cn)

## Product Information

### Source

Rabbit

### Isotype

IgG

### Purification

Affinity purification

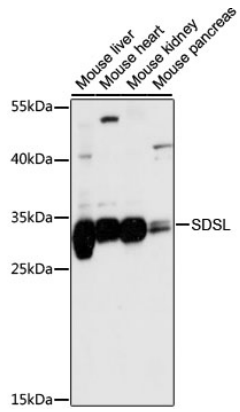
### Storage

Store at -20°C. Avoid freeze / thaw cycles.

Buffer: PBS with 0.01% thimerosal, 50% glycerol, pH7.3.

## Validation Data

---



Western blot analysis of various lysates using SDSL Rabbit pAb (A15554) at 1:1000 dilution.  
Secondary antibody: HRP Goat Anti-Rabbit IgG (H+L) (AS014) at 1:10000 dilution.  
Lysates/proteins: 25 $\mu$ g per lane.  
Blocking buffer: 3% nonfat dry milk in TBST.  
Detection: ECL Basic Kit (RM00020).  
Exposure time: 5s.