

GPRIN1 Rabbit pAb

Catalog No.: A15555

Basic Information

Observed MW

115kDa

Calculated MW

102kDa

Category

Primary antibody

Applications

ELISA, WB

Cross-Reactivity

Human, Mouse, Rat

Background

Predicted to enable phosphoprotein binding activity. Predicted to be involved in neuron projection development. Predicted to be located in growth cone. Predicted to be active in plasma membrane.

Recommended Dilutions

WB 1:200 - 1:2000

Immunogen Information

Gene ID

114787

Swiss Prot

Q7Z2K8

Immunogen

Recombinant fusion protein containing a sequence corresponding to amino acids 1-300 of human GPRIN1 (NP_443131.2).

Synonyms

GRIN1; GPRIN1

Contact

☎ | 400-999-6126

✉ | cn.market@abclonal.com.cn

🌐 | www.abclonal.com.cn

Product Information

Source

Rabbit

Isotype

IgG

Purification

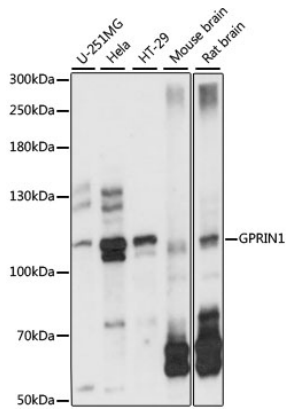
Affinity purification

Storage

Store at -20°C. Avoid freeze / thaw cycles.

Buffer: PBS with 0.01% thimerosal, 50% glycerol, pH7.3.

Validation Data



Western blot analysis of various lysates using GPRIN1 Rabbit pAb (A15555) at 1:1000 dilution.
Secondary antibody: HRP Goat Anti-Rabbit IgG (H+L) (AS014) at 1:10000 dilution.
Lysates/proteins: 25µg per lane.
Blocking buffer: 3% nonfat dry milk in TBST.
Detection: ECL Basic Kit (RM00020).
Exposure time: 5s.