

Dopamine Receptor D3 (DRD3) Rabbit pAb

Catalog No.: A1556

Basic Information

Observed MW

44kDa

Calculated MW

44kDa

Category

Primary antibody

Applications

ELISA,WB,IF/ICC

Cross-Reactivity

Human, Mouse, Rat

Background

This gene encodes the D3 subtype of the five (D1-D5) dopamine receptors. The activity of the D3 subtype receptor is mediated by G proteins which inhibit adenylyl cyclase. This receptor is localized to the limbic areas of the brain, which are associated with cognitive, emotional, and endocrine functions. Genetic variation in this gene may be associated with susceptibility to hereditary essential tremor 1. Alternative splicing of this gene results in transcript variants encoding different isoforms, although some variants may be subject to nonsense-mediated decay (NMD).

Recommended Dilutions

WB	1:500 - 1:2000
IF/ICC	1:50 - 1:200

Immunogen Information

Gene ID

1814

Swiss Prot

P35462

Immunogen

Recombinant fusion protein containing a sequence corresponding to amino acids 213-329 of human Dopamine Receptor D3 (Dopamine Receptor D3 (DRD3)) (NP_000787.2).

Synonyms

D3DR; ETM1; FET1; Dopamine Receptor D3 (DRD3)

Contact

 | 400-999-6126 | cn.market@abclonal.com.cn | www.abclonal.com.cn

Product Information

Source

Rabbit

Isotype

IgG

Purification

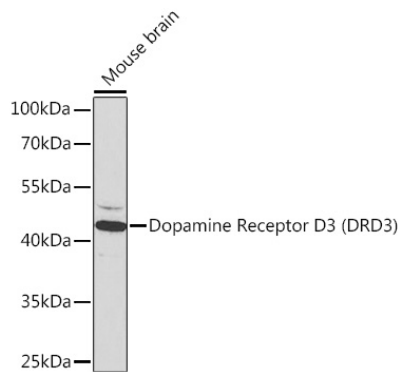
Affinity purification

Storage

Store at -20°C. Avoid freeze / thaw cycles.

Buffer: PBS with 0.02% sodium azide,50% glycerol,pH7.3.

Validation Data

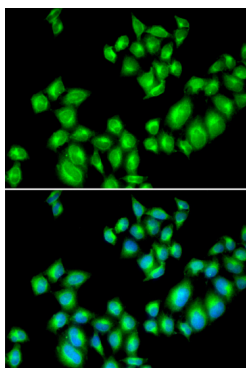


Western blot analysis of extracts of mouse brain, using Dopamine Receptor D3 (Dopamine Receptor D3 (DRD3)) antibody (A1556) at 1:1000 dilution.

Secondary antibody: HRP Goat Anti-Rabbit IgG (H+L) (AS014) at 1:10000 dilution.

Lysates/proteins: 25µg per lane.

Blocking buffer: 3% nonfat dry milk in TBST.



Immunofluorescence analysis of U2OS cells using Dopamine Receptor D3 (Dopamine Receptor D3 (DRD3)) antibody (A1556). Blue: DAPI for nuclear staining.