

KIF7 Rabbit pAb

Catalog No.: A15581 **1 Publications**

Basic Information

Observed MW

150kDa

Calculated MW

151kDa

Category

Primary antibody

Applications

ELISA, WB

Cross-Reactivity

Human

Background

This gene encodes a cilia-associated protein belonging to the kinesin family. This protein plays a role in the sonic hedgehog (SHH) signaling pathway through the regulation of GLI transcription factors. It functions as a negative regulator of the SHH pathway by preventing inappropriate activation of GLI2 in the absence of ligand, and as a positive regulator by preventing the processing of GLI3 into its repressor form. Mutations in this gene have been associated with various ciliopathies.

Recommended Dilutions

WB 1:200 - 1:2000

Immunogen Information

Gene ID

374654

Swiss Prot

Q2M1P5

Immunogen

Recombinant fusion protein containing a sequence corresponding to amino acids 1044-1343 of human KIF7 (NP_940927.2).

Synonyms

ACLS; AGBK; HLS2; MMEDF; JBTS12; UNQ340; KIF7

Contact

 | 400-999-6126

 | cn.market@abclonal.com.cn

 | www.abclonal.com.cn

Product Information

Source

Rabbit

Isotype

IgG

Purification

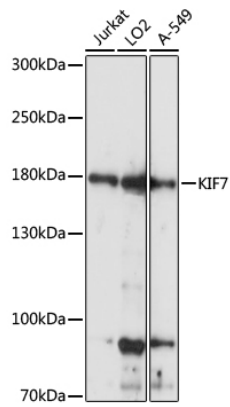
Affinity purification

Storage

Store at -20°C. Avoid freeze / thaw cycles.

Buffer: PBS with 0.01% thimerosal, 50% glycerol, pH7.3.

Validation Data



Western blot analysis of various lysates using KIF7 Rabbit pAb (A15581) at 1:1000 dilution.
Secondary antibody: HRP Goat Anti-Rabbit IgG (H+L) (AS014) at 1:10000 dilution.
Lysates/proteins: 25µg per lane.
Blocking buffer: 3% nonfat dry milk in TBST.
Detection: ECL Basic Kit (RM00020).
Exposure time: 5s.