

CHAC1 Rabbit pAb

Catalog No.: A15584 **3 Publications**

Basic Information

Observed MW

38kDa

Calculated MW

24kDa

Category

Primary antibody

Applications

WB,IF-P,IHC-P,ELISA

Cross-Reactivity

Human, Mouse, Rat

Background

This gene encodes a member of the gamma-glutamylcyclotransferase family of proteins. The encoded protein has been shown to promote neuronal differentiation by deglycosylation of the Notch receptor, which prevents receptor maturation and inhibits Notch signaling. This protein may also play a role in the unfolded protein response, and in regulation of glutathione levels and oxidative balance in the cell. Elevated expression of this gene may indicate increased risk of cancer recurrence among breast and ovarian cancer patients.

Recommended Dilutions

WB	1:500 - 1:1000
IF-P	1:50 - 1:200
IHC-P	1:50 - 1:200
ELISA	Recommended starting concentration is 1 µg/mL. Please optimize the concentration based on your specific assay requirements.

Contact

	400-999-6126
	cn.market@abclonal.com.cn
	www.abclonal.com.cn

Immunogen Information

Gene ID

79094

Swiss Prot

Q9BUX1

Immunogen

Recombinant protein (or fragment). This information is considered to be commercially sensitive.

Synonyms

CHAC1

Product Information

Source

Rabbit

Isotype

IgG

Purification

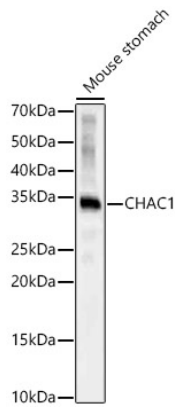
Affinity purification

Storage

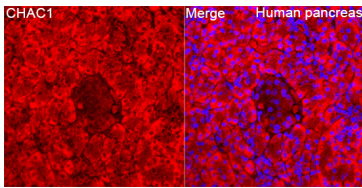
Store at -20°C. Avoid freeze / thaw cycles.

Buffer: PBS containing 50% glycerol, preserved with proclin300 or sodium azide (as specified on the Certificate of Analysis), pH 7.3.

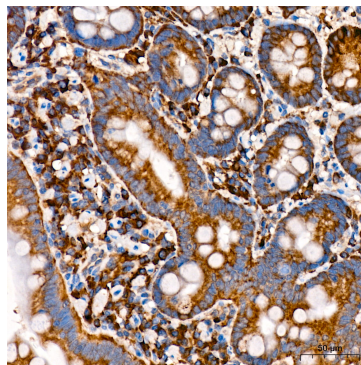
Validation Data



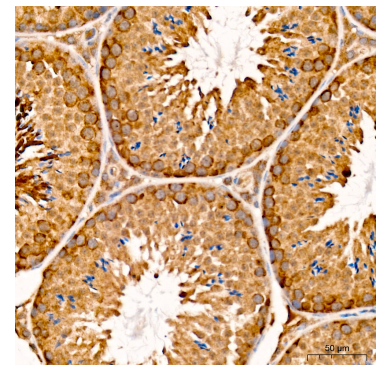
Western blot analysis of lysates from Mouse stomach, using CHAC1 Rabbit pAb (A15584) at 1:900 dilution. Secondary antibody: HRP-conjugated Goat anti-Rabbit IgG (H+L) (AS014) at 1:10000 dilution. Lysates/proteins: 25µg per lane. Blocking buffer: 3% nonfat dry milk in TBST. Detection: ECL Basic Kit (RM00020). Exposure time: 60s.



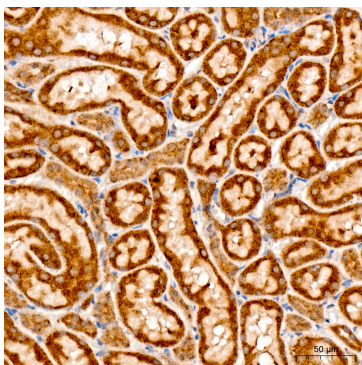
Immunofluorescence analysis of paraffin-embedded Human pancreas tissue using CHAC1 Rabbit pAb (A15584) at a dilution of 1:100 (40x lens). Secondary antibody: Cy3-conjugated Goat anti-Rabbit IgG (H+L) (AS007) at 1:500 dilution. Blue: DAPI for nuclear staining. Perform high pressure antigen retrieval with 0.01 M citrate buffer (pH 6.0) prior to IF staining.



Immunohistochemistry analysis of paraffin-embedded Human small intestine tissue using CHAC1 Rabbit pAb (A15584) at a dilution of 1:100 (40x lens). High pressure antigen retrieval was performed with 0.01 M citrate buffer (pH 6.0) prior to IHC staining.



Immunohistochemistry analysis of paraffin-embedded Mouse testis tissue using CHAC1 Rabbit pAb (A15584) at a dilution of 1:100 (40x lens). High pressure antigen retrieval was performed with 0.01 M citrate buffer (pH 6.0) prior to IHC staining.



Immunohistochemistry analysis of paraffin-embedded Rat kidney tissue using CHAC1 Rabbit pAb (A15584) at a dilution of 1:100 (40x lens). High pressure antigen retrieval was performed with 0.01 M citrate buffer (pH 6.0) prior to IHC staining.