

# PAH Rabbit pAb

Catalog No.: A1559 **2 Publications**

## Basic Information

### Observed MW

52kDa

### Calculated MW

52kDa

### Category

Primary antibody

### Applications

ELISA, WB, IF/ICC

### Cross-Reactivity

Human, Mouse, Rat

## Background

This gene encodes a member of the bipterin-dependent aromatic amino acid hydroxylase protein family. The encoded phenylalanine hydroxylase enzyme hydroxylates phenylalanine to tyrosine and is the rate-limiting step in phenylalanine catabolism. Deficiency of this enzyme activity results in the autosomal recessive disorder phenylketonuria.

## Recommended Dilutions

<b>WB</b>	1:500 - 1:1000
<b>IF/ICC</b>	1:50 - 1:200

## Immunogen Information

### Gene ID

5053

### Swiss Prot

P00439

### Immunogen

Recombinant fusion protein containing a sequence corresponding to amino acids 1-290 of human PAH (NP\_000268.1).

### Synonyms

PH; PKU; PKU1; PAH

## Contact

 | 400-999-6126

 | [cn.market@abclonal.com.cn](mailto:cn.market@abclonal.com.cn)

 | [www.abclonal.com.cn](http://www.abclonal.com.cn)

## Product Information

### Source

Rabbit

### Isotype

IgG

### Purification

Affinity purification

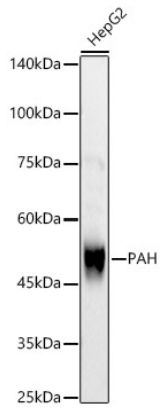
### Storage

Store at -20°C. Avoid freeze / thaw cycles.

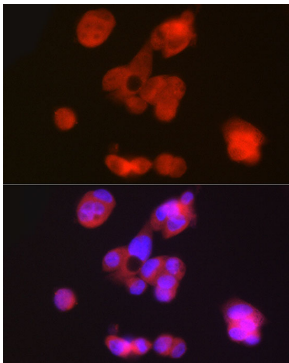
Buffer: PBS with 0.02% sodium azide, 50% glycerol, pH7.3.

## Validation Data

---



Western blot analysis of HepG2, using PAH antibody (A1559) at 1:700 dilution.  
Secondary antibody: HRP Goat Anti-Rabbit IgG (H+L) (AS014) at 1:10000 dilution.  
Lysates/proteins: 25µg per lane.  
Blocking buffer: 3% nonfat dry milk in TBST.  
Detection: ECL Basic Kit (RM00020).  
Exposure time: 30s.



Immunofluorescence analysis of HepG2 cells using PAH Rabbit pAb (A1559) at dilution of 1:50 (40x lens). Blue: DAPI for nuclear staining.