

LC3A / LC3B Rabbit pAb

Catalog No.: A15591 **4 Publications**

Basic Information

Observed MW

14kDa, 16kDa/14kDa/16kDa

Calculated MW

14kDa

Category

Primary antibody

Applications

ELISA, WB, IHC-P

Cross-Reactivity

Human, Mouse

Background

The product of this gene is a subunit of neuronal microtubule-associated MAP1A and MAP1B proteins, which are involved in microtubule assembly and important for neurogenesis. Studies on the rat homolog implicate a role for this gene in autophagy, a process that involves the bulk degradation of cytoplasmic component.

Recommended Dilutions

WB 1:500 - 1:1000

IHC-P 1:50 - 1:200

Immunogen Information

Gene ID

84557/81631

Swiss Prot

Q9GZQ8/Q9H492

Immunogen

Recombinant fusion protein containing a sequence corresponding to amino acids 1-125 of human LC3A / LC3B (NP_073729.1).

Synonyms

MAP1LC3B; ATG8F; LC3B; MAP1A/1BLC3; MAP1LC3B-a; MAP1LC3A; ATG8E; LC3; LC3A; MAP1ALC3; MAP1BLC3; LC3A/LC3B; LC3A / LC3B

Contact

☎ | 400-999-6126

✉ | cn.market@abclonal.com.cn

🌐 | www.abclonal.com.cn

Product Information

Source

Rabbit

Isotype

IgG

Purification

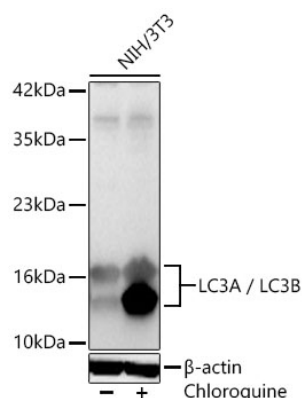
Affinity purification

Storage

Store at -20°C. Avoid freeze / thaw cycles.

Buffer: PBS with 0.09% Sodium azide, 50% glycerol, pH7.3.

Validation Data



Western blot analysis of lysates from NIH/3T3 cells using LC3A / LC3B Rabbit pAb (A15591) at 1:1000 dilution incubated at room temperature for 1.5 hours. NIH/3T3 cells were treated by Chloroquine (50 μ M) at 37°C for 20 hours.

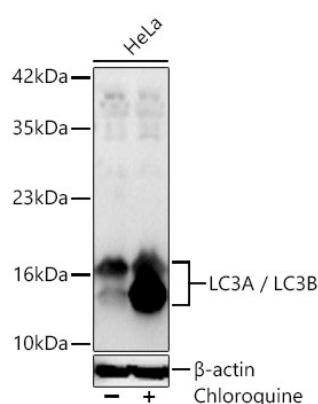
Secondary antibody: HRP-conjugated Goat anti-Rabbit IgG (H+L) (AS014) at 1:10000 dilution.

Lysates/proteins: 30 μ g per lane.

Blocking buffer: 3 % nonfat dry milk in TBST.

Detection: ECL Basic Kit (RM00020).

Exposure time: 60s.



Western blot analysis of lysates from HeLa cells using LC3A / LC3B Rabbit pAb (A15591) at 1:1000 dilution incubated at room temperature for 1.5 hours. HeLa cells were treated by Chloroquine (50 μ M) at 37°C for 20 hours.

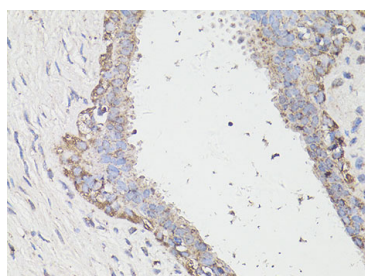
Secondary antibody: HRP-conjugated Goat anti-Rabbit IgG (H+L) (AS014) at 1:10000 dilution.

Lysates/proteins: 30 μ g per lane.

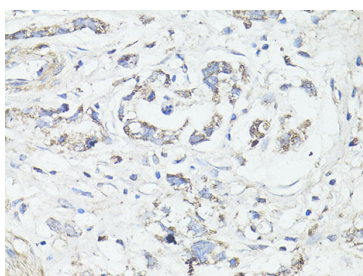
Blocking buffer: 3 % nonfat dry milk in TBST.

Detection: ECL Basic Kit (RM00020).

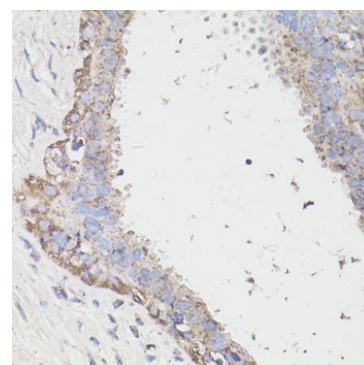
Exposure time: 60s.



Immunohistochemistry analysis of LC3A / LC3B in paraffin-embedded human breast cancer using LC3A / LC3B Rabbit pAb (A15591) at dilution of 1:100 (40x lens). Perform microwave antigen retrieval with 10 mM PBS buffer pH 7.2 before commencing with IHC staining protocol.



Immunohistochemistry analysis of LC3A / LC3B in paraffin-embedded human gastric cancer using LC3A / LC3B Rabbit pAb (A15591) at dilution of 1:100 (40x lens). Perform microwave antigen retrieval with 10 mM PBS buffer pH 7.2 before commencing with IHC staining protocol.



Immunohistochemistry analysis of LC3A / LC3B in paraffin-embedded human mammary cancer using LC3A / LC3B Rabbit pAb (A15591) at dilution of 1:100 (40x lens). Perform microwave antigen retrieval with 10 mM PBS buffer pH 7.2 before commencing with IHC staining protocol.