

ATG12 Rabbit pAb

Catalog No.: A15609 **2 Publications**

Basic Information

Observed MW

55kDa

Calculated MW

15kDa

Category

Primary antibody

Applications

ELISA, WB, IF/ICC

Cross-Reactivity

Human, Mouse, Rat

Background

Autophagy is a process of bulk protein degradation in which cytoplasmic components, including organelles, are enclosed in double-membrane structures called autophagosomes and delivered to lysosomes or vacuoles for degradation. ATG12 is the human homolog of a yeast protein involved in autophagy (Mizushima et al., 1998 [PubMed 9852036]).

Recommended Dilutions

WB 1:500 - 1:1000

IF/ICC 1:50 - 1:200

Immunogen Information

Gene ID

9140

Swiss Prot

O94817

Immunogen

A synthetic peptide corresponding to a sequence within amino acids 1-100 of human ATG12 (NP_004698.3).

Synonyms

APG12; FBR93; APG12L; HAPG12; ATG12

Contact

☎ | 400-999-6126

✉ | cn.market@abclonal.com.cn

🌐 | www.abclonal.com.cn

Product Information

Source

Rabbit

Isotype

IgG

Purification

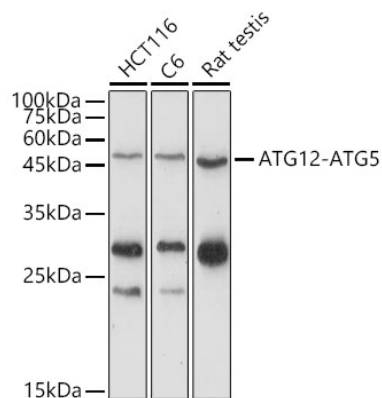
Affinity purification

Storage

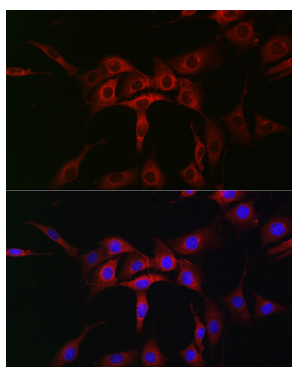
Store at -20°C. Avoid freeze / thaw cycles.

Buffer: PBS with 0.05% proclin300, 50% glycerol, pH7.3.

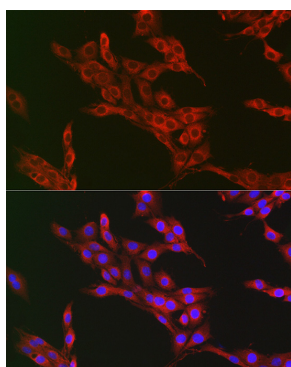
Validation Data



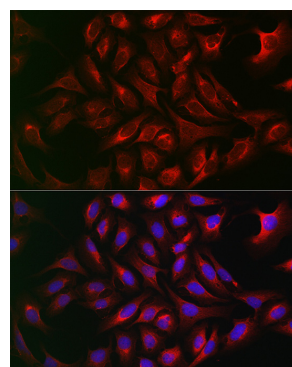
Western blot analysis of extracts of various cell lines, using ATG12 antibody (A15609) at 1:1000 dilution. Secondary antibody: HRP Goat Anti-Rabbit IgG (H+L) (AS014) at 1:10000 dilution. Lysates/proteins: 25µg per lane. Blocking buffer: 3% nonfat dry milk in TBST. Detection: ECL Enhanced Kit (RM00021). Exposure time: 180s.



Immunofluorescence analysis of NIH/3T3 cells using ATG12 Rabbit pAb (A15609) at dilution of 1:50 (40x lens). Blue: DAPI for nuclear staining.



Immunofluorescence analysis of PC-12 cells using ATG12 Rabbit pAb (A15609) at dilution of 1:50 (40x lens). Blue: DAPI for nuclear staining.



Immunofluorescence analysis of U2OS cells using ATG12 Rabbit pAb (A15609) at dilution of 1:50 (40x lens). Blue: DAPI for nuclear staining.