

NLRP6 Rabbit pAb

Catalog No.: A15628

16 Publications

Basic Information

Observed MW

102kDa

Calculated MW

99kDa

Category

Primary antibody

Applications

WB, ELISA

Cross-Reactivity

Human, Mouse, Rat

Background

The protein encoded by this gene binds arginine-vasopressin and may be involved in the arginine-vasopressin-mediated regulation of renal salt-water balance. The encoded protein also mediates inflammatory responses in the colon to allow recovery from intestinal epithelial damage and protects against tumorigenesis and the development of colitis. Finally, this protein can increase activation of NF-kappa-B, activation of CASP1 through interaction with ASC, and cAMP accumulation. Two transcript variants encoding different isoforms have been found for this gene.

Recommended Dilutions

WB 1:100 - 1:500

ELISA Recommended starting concentration is 1 µg/mL. Please optimize the concentration based on your specific assay requirements.

Immunogen Information

Gene ID

171389

Swiss Prot

P59044

Immunogen

Synthetic peptide. This information is considered to be commercially sensitive.

Synonyms

AVR; NAVR; PAN3; NALP6; PYPAF5; CLR11.4; NAVR/AVR; NLRP6

Contact

☎ | 400-999-6126

✉ | cn.market@abclonal.com.cn

🌐 | www.abclonal.com.cn

Product Information

Source

Rabbit

Isotype

IgG

Purification

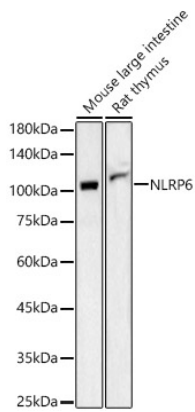
Affinity purification

Storage

Store at -20°C. Avoid freeze / thaw cycles.

Buffer: Buffer: PBS containing 50% glycerol, preserved with proclin300 or sodium azide (as specified on the Certificate of Analysis), pH 7.3.

Validation Data



Western blot analysis of various lysates, using NLRP6 Rabbit pAb (A15628) at 1:400 dilution.
Secondary antibody: HRP-conjugated Goat anti-Rabbit IgG (H+L) (AS014) at 1:10000 dilution.
Lysates/proteins: 25µg per lane.
Blocking buffer: 3% nonfat dry milk in TBST.
Detection: ECL Basic Kit (RM00020).
Exposure time: 180s.