

# KLB Rabbit pAb

Catalog No.: A15629 **5 Publications**

## Basic Information

### Observed MW

120kDa

### Calculated MW

120kDa

### Category

Primary antibody

### Applications

ELISA, WB

### Cross-Reactivity

Human, Mouse, Rat

## Background

Enables fibroblast growth factor binding activity and fibroblast growth factor receptor binding activity. Predicted to be involved in fibroblast growth factor receptor signaling pathway. Predicted to act upstream of or within positive regulation of MAPKKK cascade by fibroblast growth factor receptor signaling pathway and positive regulation of cell population proliferation. Predicted to be located in plasma membrane. Predicted to be active in endoplasmic reticulum.

## Recommended Dilutions

WB 1:500 - 1:2000

## Immunogen Information

### Gene ID

152831

### Swiss Prot

Q86Z14

### Immunogen

Recombinant fusion protein containing a sequence corresponding to amino acids 720-990 of human KLB (NP\_783864.1).

### Synonyms

BKL; KLB

## Contact

☎ | 400-999-6126

✉ | [cn.market@abclonal.com.cn](mailto:cn.market@abclonal.com.cn)

🌐 | [www.abclonal.com.cn](http://www.abclonal.com.cn)

## Product Information

### Source

Rabbit

### Isotype

IgG

### Purification

Affinity purification

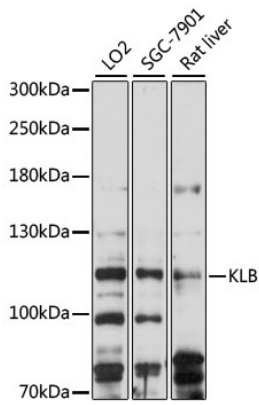
### Storage

Store at -20°C. Avoid freeze / thaw cycles.

Buffer: PBS with 0.01% thimerosal, 50% glycerol, pH7.3.

## Validation Data

---



Western blot analysis of various lysates using KLB Rabbit pAb (A15629) at 1:1000 dilution.  
Secondary antibody: HRP Goat Anti-Rabbit IgG (H+L) (AS014) at 1:10000 dilution.  
Lysates/proteins: 25µg per lane.  
Blocking buffer: 3% nonfat dry milk in TBST.  
Detection: ECL Basic Kit (RM00020).  
Exposure time: 90s.