

ATM Rabbit pAb

Catalog No.: A15645

Basic Information

Observed MW

Calculated MW
351kDa

Category
Primary antibody

Applications
WB,IF/ICC,ELISA

Cross-Reactivity
Human, Rat

Background

The protein encoded by this gene belongs to the PI3/PI4-kinase family. This protein is an important cell cycle checkpoint kinase that phosphorylates; thus, it functions as a regulator of a wide variety of downstream proteins, including tumor suppressor proteins p53 and BRCA1, checkpoint kinase CHK2, checkpoint proteins RAD17 and RAD9, and DNA repair protein NBS1. This protein and the closely related kinase ATR are thought to be master controllers of cell cycle checkpoint signaling pathways that are required for cell response to DNA damage and for genome stability. Mutations in this gene are associated with ataxia telangiectasia, an autosomal recessive disorder.

Recommended Dilutions

WB 1:500 - 1:1000

IF/ICC 1:50 - 1:200

ELISA Recommended starting concentration is 1 µg/mL. Please optimize the concentration based on your specific assay requirements.

Immunogen Information

Gene ID 472	Swiss Prot Q13315
-----------------------	-----------------------------

Immunogen
Recombinant fusion protein containing a sequence corresponding to amino acids 2320-2566 of ATM (NP_000042.3).

Synonyms
AT1; ATA; ATC; ATD; ATE; ATDC; TEL1; TELO1; ATM

Contact

☎ | 400-999-6126

✉ | cn.market@abclonal.com.cn

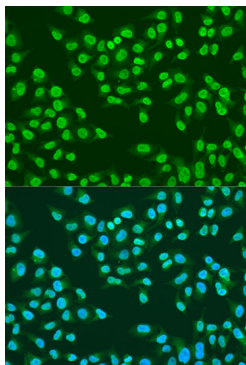
🌐 | www.abclonal.com.cn

Product Information

Source Rabbit	Isotype IgG	Purification Affinity purification
-------------------------	-----------------------	--

Storage
Store at -20°C. Avoid freeze / thaw cycles.
Buffer: PBS with 0.01% thimerosal, 50% glycerol, pH7.3.

Validation Data



Immunofluorescence analysis of U2OS cells using ATM Rabbit pAb (A15645) at dilution of 1:100. Secondary antibody: Cy3-conjugated Goat anti-Rabbit IgG (H+L) (AS007) at 1:500 dilution. Blue: DAPI for nuclear staining.