

PBR/TSPO Rabbit pAb

Catalog No.: A15649 **1 Publications**

Basic Information

Observed MW

19kDa

Calculated MW

19kDa

Category

Primary antibody

Applications

WB,IF/ICC,ELISA

Cross-Reactivity

Mouse

Background

Present mainly in the mitochondrial compartment of peripheral tissues, the protein encoded by this gene interacts with some benzodiazepines and has different affinities than its endogenous counterpart. The protein is a key factor in the flow of cholesterol into mitochondria to permit the initiation of steroid hormone synthesis. Alternatively spliced transcript variants have been reported; one of the variants lacks an internal exon and is considered non-coding, and the other variants encode the same protein.

Recommended Dilutions

WB 1:500 - 1:1000

IF/ICC 1:50 - 1:100

ELISA Recommended starting concentration is 1 µg/mL. Please optimize the concentration based on your specific assay requirements.

Immunogen Information

Gene ID

706

Swiss Prot

P30536

Immunogen

Recombinant fusion protein containing a sequence corresponding to amino acids 1-50 of human PBR/PBR/TSPO (NP_000705.2).

Synonyms

DBI; IBP; MBR; PBR; PBS; BPBS; BZRP; PKBS; PTBR; mDRC; pk18; TSPO1; PBR/TSPO

Contact

 | 400-999-6126

 | cn.market@abclonal.com.cn

 | www.abclonal.com.cn

Product Information

Source

Rabbit

Isotype

IgG

Purification

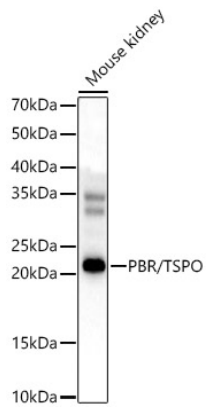
Affinity purification

Storage

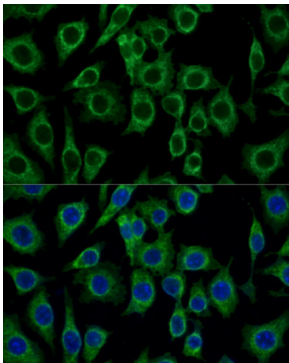
Store at -20°C. Avoid freeze / thaw cycles.

Buffer: PBS with 0.05% proclin300,50% glycerol,pH7.3.

Validation Data



Western blot analysis of various lysates, using PBR/TSPO Rabbit pAb (A15649) at 1:1000 dilution.
Secondary antibody: HRP-conjugated Goat anti-Rabbit IgG (H+L) (AS014) at 1:10000 dilution.
Lysates/proteins: 25µg per lane.
Blocking buffer: 3% nonfat dry milk in TBST.
Detection: ECL Basic Kit (RM00020).
Exposure time: 60s.



Immunofluorescence analysis of L929 cells using PBR/TSPO Rabbit pAb (A15649) at dilution of 1:100 (40x lens). Secondary antibody: Cy3-conjugated Goat anti-Rabbit IgG (H+L) (AS007) at 1:500 dilution. Blue: DAPI for nuclear staining.