

CD147/BSG Rabbit pAb

Catalog No.: A1566

Basic Information

Observed MW

38-65kDa

Calculated MW

42kDa

Category

Primary antibody

Applications

WB,IHC-P,IP,ELISA

Cross-Reactivity

Human, Mouse, Rat

Background

The protein encoded by this gene, basigin, is a plasma membrane protein that is important in spermatogenesis, embryo implantation, neural network formation, and tumor progression. Basigin is also a member of the immunoglobulin superfamily, ubiquitously expressed in various tissues. Multiple transcript variants encoding different isoforms have been found for this gene.

Recommended Dilutions

WB 1:500 - 1:1000

IHC-P 1:50 - 1:200

IP 0.5µg-4µg antibody for
400µg-600µg extracts of
whole cells

ELISA Recommended starting
concentration is 1 µg/mL.
Please optimize the
concentration based on
your specific assay
requirements.

Immunogen Information

Gene ID

682

Swiss Prot

P35613

Immunogen

A synthetic peptide corresponding to a sequence within amino acids 286-385 of human CD147/CD147/BSG (NP_001719.2).

Synonyms

OK; 5F7; TCSF; CD147; EMPRIN; HAbl8G; EMMPRIN; CD147/BSG

Contact

☎ | 400-999-6126

✉ | cn.market@abclonal.com.cn

🌐 | www.abclonal.com.cn

Product Information

Source

Rabbit

Isotype

IgG

Purification

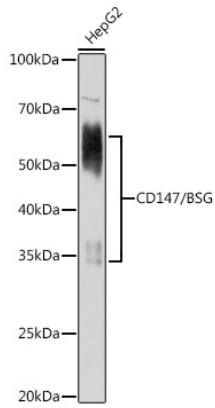
Affinity purification

Storage

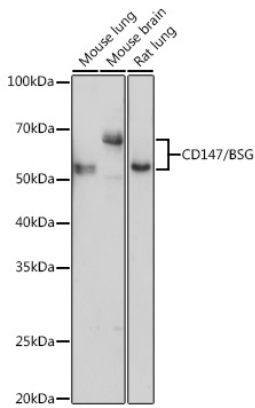
Store at -20°C. Avoid freeze / thaw cycles.

Buffer: PBS with 0.05% proclin300,50% glycerol,pH7.3.

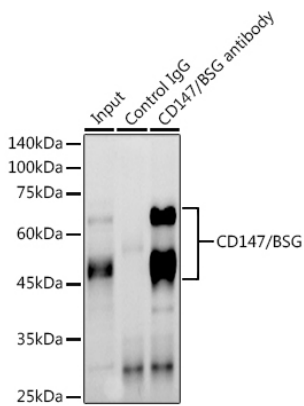
Validation Data



Western blot analysis of lysates from HepG2 cells, using CD147/BSG Rabbit pAb (A1566) at 1:1000 dilution.
Secondary antibody: HRP-conjugated Goat anti-Rabbit IgG (H+L) (AS014) at 1:10000 dilution.
Lysates/proteins: 25µg per lane.
Blocking buffer: 3% nonfat dry milk in TBST.
Detection: ECL Basic Kit (RM00020).
Exposure time: 10s.

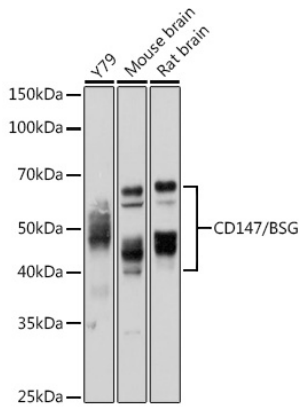


Western blot analysis of various lysates using CD147/BSG Rabbit pAb (A1566) at 1:1000 dilution.
Secondary antibody: HRP-conjugated Goat anti-Rabbit IgG (H+L) (AS014) at 1:10000 dilution.
Lysates/proteins: 25µg per lane.
Blocking buffer: 3% nonfat dry milk in TBST.
Detection: ECL Basic Kit (RM00020).
Exposure time: 180s.

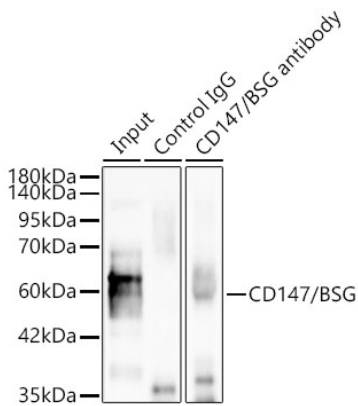


Immunoprecipitation analysis of 600 µg extracts of Mouse brain using 3 µg CD147/BSG antibody (A1566).
Western blot was performed from the immunoprecipitate using CD147/BSG antibody (A1566) at a dilution of 1:1000.

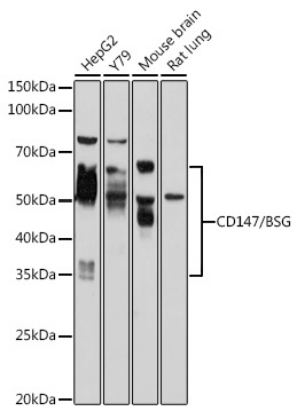
Validation Data



Western blot analysis of various lysates using CD147/BSG Rabbit pAb (A1566) at 1:1000 dilution. Secondary antibody: HRP-conjugated Goat anti-Rabbit IgG (H+L) (AS014) at 1:10000 dilution. Lysates/proteins: 25µg per lane. Blocking buffer: 3% nonfat dry milk in TBST. Detection: ECL Basic Kit (RM00020). Exposure time: 5s.

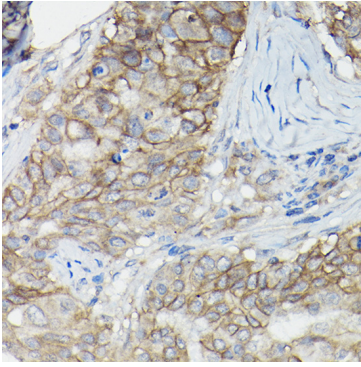


Immunoprecipitation of CD147/BSG in 200 µg extracts from Hep G2 cells using 0.5 µg CD147/BSG Rabbit pAb (A1566). Western blot analysis was performed using CD147/BSG Rabbit pAb (A1566) at 1:2000 dilution.

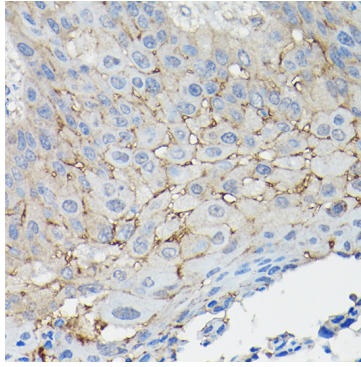


Western blot analysis of various lysates using CD147/BSG Rabbit pAb (A1566) at 1:1000 dilution. Secondary antibody: HRP-conjugated Goat anti-Rabbit IgG (H+L) (AS014) at 1:10000 dilution. Lysates/proteins: 25µg per lane. Blocking buffer: 3% nonfat dry milk in TBST. Detection: ECL Basic Kit (RM00020). Exposure time: 30s.

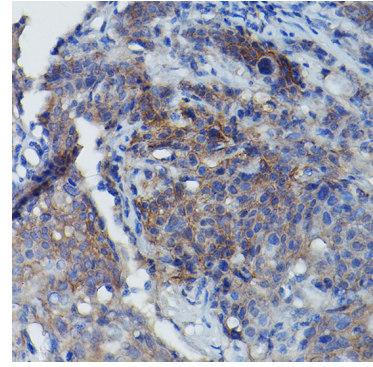
Validation Data



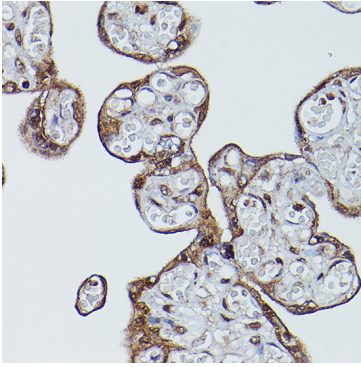
Immunohistochemistry analysis of paraffin-embedded Human breast cancer using CD147/CD147/BSG Rabbit pAb (A1566) at dilution of 1:100 (40x lens). High pressure antigen retrieval performed with 0.01M Citrate Bufferr (pH 6.0) prior to IHC staining.



Immunohistochemistry analysis of paraffin-embedded Human esophageal cancer using CD147/CD147/BSG Rabbit pAb (A1566) at dilution of 1:100 (40x lens). High pressure antigen retrieval performed with 0.01M Citrate Bufferr (pH 6.0) prior to IHC staining.



Immunohistochemistry analysis of paraffin-embedded Human cervix cancer using BSG Rabbit pAb (A1566) at dilution of 1:100 (40x lens). High pressure antigen retrieval performed with 0.01M Citrate Bufferr (pH 6.0) prior to IHC staining.



Immunohistochemistry analysis of paraffin-embedded Human placenta using BSG Rabbit pAb (A1566) at dilution of 1:100 (40x lens). High pressure antigen retrieval performed with 0.01M Citrate Bufferr (pH 6.0) prior to IHC staining.