

EXTL2 Rabbit pAb

Catalog No.: A15669

Basic Information

Observed MW

37kDa

Calculated MW

37kDa

Category

Primary antibody

Applications

ELISA, WB

Cross-Reactivity

Human, Mouse

Background

Enables alpha-1,4-N-acetylgalactosaminyltransferase activity and glucuronyl-galactosyl-proteoglycan 4-alpha-N-acetylglucosaminyltransferase activity. Involved in N-acetylglucosamine metabolic process and UDP-N-acetylgalactosamine metabolic process. Located in cytosol; endoplasmic reticulum; and nucleoplasm.

Recommended Dilutions

WB 1:500 - 1:2000

Immunogen Information

Gene ID

2135

Swiss Prot

Q9UBQ6

Immunogen

Recombinant fusion protein containing a sequence corresponding to amino acids 41-330 of human EXTL2 (NP_001430.1).

Synonyms

EXTR2; EXTL2

Contact

☎ | 400-999-6126

✉ | cn.market@abclonal.com.cn

🌐 | www.abclonal.com.cn

Product Information

Source

Rabbit

Isotype

IgG

Purification

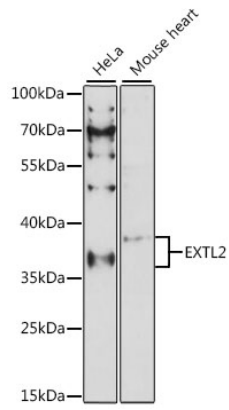
Affinity purification

Storage

Store at -20°C. Avoid freeze / thaw cycles.

Buffer: PBS with 0.01% thimerosal, 50% glycerol, pH7.3.

Validation Data



Western blot analysis of various lysates using EXTL2 Rabbit pAb (A15669) at 1:1000 dilution.
Secondary antibody: HRP Goat Anti-Rabbit IgG (H+L) (AS014) at 1:10000 dilution.
Lysates/proteins: 25 μ g per lane.
Blocking buffer: 3% nonfat dry milk in TBST.
Detection: ECL Basic Kit (RM00020).
Exposure time: 90s.