

Folate Binding Protein(FBP) / FOLR1 Rabbit pAb

Catalog No.: A15672

Basic Information

Observed MW

37kDa

Calculated MW

30kDa

Category

Primary antibody

Applications

ELISA,WB,IHC-P,IF/ICC

Cross-Reactivity

Human, Mouse, Rat

Background

The protein encoded by this gene is a member of the folate receptor family. Members of this gene family bind folic acid and its reduced derivatives, and transport 5-methyltetrahydrofolate into cells. This gene product is a secreted protein that either anchors to membranes via a glycosyl-phosphatidylinositol linkage or exists in a soluble form. Mutations in this gene have been associated with neurodegeneration due to cerebral folate transport deficiency. Due to the presence of two promoters, multiple transcription start sites, and alternative splicing, multiple transcript variants encoding the same protein have been found for this gene.

Recommended Dilutions

WB	1:500 - 1:2000
IHC-P	1:50 - 1:200
IF/ICC	1:50 - 1:200

Immunogen Information

Gene ID

2348

Swiss Prot

P15328

Immunogen

A synthetic peptide corresponding to a sequence within amino acids 1-100 of human Folate Binding Protein(FBP) / FOLR1 (NP_000793.1).

Synonyms

FBP; FOLR; NCFTD; FRalpha; Folate Binding Protein(FBP) / FOLR1

Contact

☎ | 400-999-6126

✉ | cn.market@abclonal.com.cn

🌐 | www.abclonal.com.cn

Product Information

Source

Rabbit

Isotype

IgG

Purification

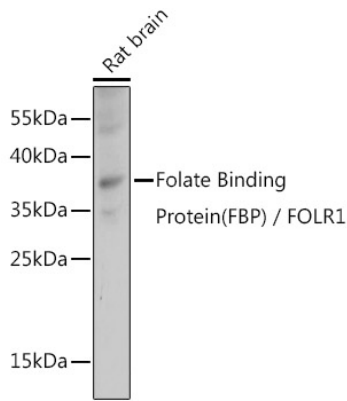
Affinity purification

Storage

Store at -20°C. Avoid freeze / thaw cycles.

Buffer: PBS with 0.01% thimerosal,50% glycerol,pH7.3.

Validation Data



Western blot analysis of lysates from Rat brain, using Folate Binding Protein(FBP) / FOLR1 Rabbit pAb (A15672) at 1:1000 dilution.

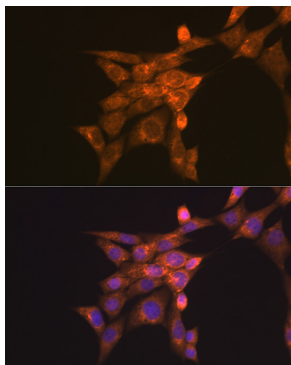
Secondary antibody: HRP Goat Anti-Rabbit IgG (H+L) (AS014) at 1:10000 dilution.

Lysates/proteins: 25µg per lane.

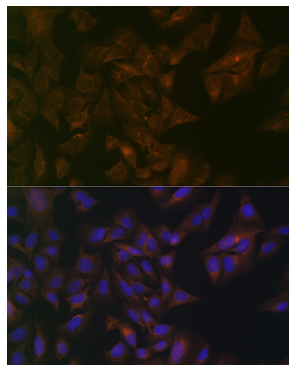
Blocking buffer: 3% nonfat dry milk in TBST.

Detection: ECL Basic Kit (RM00020).

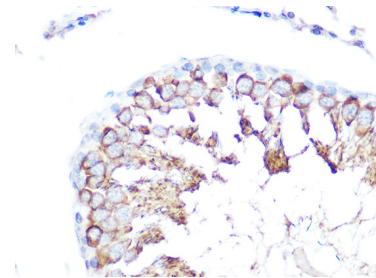
Exposure time: 1s.



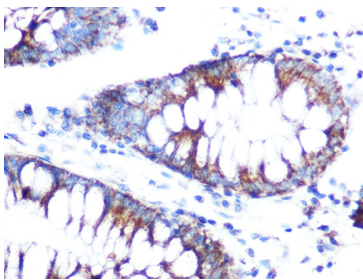
Immunofluorescence analysis of NIH-3T3 cells using Folate Binding Protein(FBP) / FOLR1 Rabbit pAb (A15672) at dilution of 1:100 (40x lens). Secondary antibody: Cy3 Goat Anti-Rabbit IgG (H+L) (AS007) at 1:500 dilution. Blue: DAPI for nuclear staining.



Immunofluorescence analysis of U-2 OS cells using Folate Binding Protein(FBP) / FOLR1 Rabbit pAb (A15672) at dilution of 1:100 (40x lens). Secondary antibody: Cy3 Goat Anti-Rabbit IgG (H+L) (AS007) at 1:500 dilution. Blue: DAPI for nuclear staining.



Immunohistochemistry analysis of paraffin-embedded rat testis using Folate Binding Protein(FBP) / FOLR1 Rabbit pAb (A15672) at dilution of 1:100 (40x lens). Perform microwave antigen retrieval with 10 mM Tris/EDTA buffer pH 9.0 before commencing with IHC staining protocol.



Immunohistochemistry analysis of paraffin-embedded human colon using Folate Binding Protein(FBP) / FOLR1 Rabbit pAb (A15672) at dilution of 1:100 (40x lens). Perform microwave antigen retrieval with 10 mM Tris/EDTA buffer pH 9.0 before commencing with IHC staining protocol.