

GNGT1 Rabbit pAb

Catalog No.: A15675

Basic Information

Observed MW

10kDa

Calculated MW

8kDa

Category

Primary antibody

Applications

ELISA, WB, IF/ICC

Cross-Reactivity

Mouse, Rat

Background

This gene encodes the gamma subunit of transducin, a guanine nucleotide-binding protein (G protein) that is found in rod outer segments. Transducin, also known as GMPase, mediates the activation of a cyclic GTP-specific (guanosine monophosphate) phosphodiesterase by rhodopsin.

Recommended Dilutions

WB 1:500 - 1:2000

IF/ICC 1:50 - 1:100

Immunogen Information

Gene ID

2792

Swiss Prot

P63211

Immunogen

Recombinant fusion protein containing a sequence corresponding to amino acids 1-45 of human GNGT1 (NP_068774.1).

Synonyms

GNG1; HG3G1; GNGT1

Contact

 | 400-999-6126

 | cn.market@abclonal.com.cn

 | www.abclonal.com.cn

Product Information

Source

Rabbit

Isotype

IgG

Purification

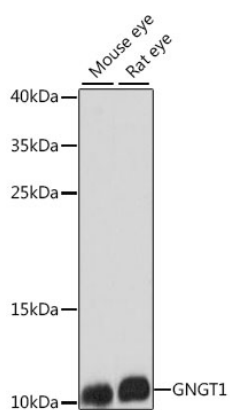
Affinity purification

Storage

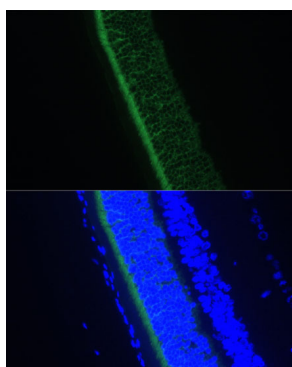
Store at -20°C. Avoid freeze / thaw cycles.

Buffer: PBS with 0.01% thimerosal, 50% glycerol, pH7.3.

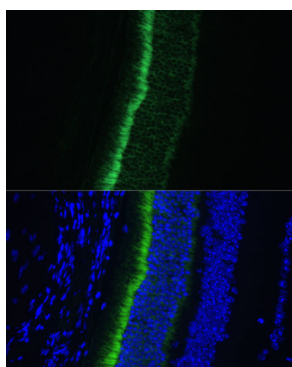
Validation Data



Western blot analysis of various lysates using GNGT1 Rabbit pAb (A15675) at 1:1000 dilution.
Secondary antibody: HRP Goat Anti-Rabbit IgG (H+L) (AS014) at 1:10000 dilution.
Lysates/proteins: 25µg per lane.
Blocking buffer: 3% nonfat dry milk in TBST.
Detection: ECL Basic Kit (RM00020).
Exposure time: 90s.



Immunofluorescence analysis of paraffin-embedded rat eye using GNGT1 Rabbit pAb (A15675) at dilution of 1:100 (40x lens).
Secondary antibody: Cy3 Goat Anti-Rabbit IgG (H+L) (AS007) at 1:500 dilution. Blue: DAPI for nuclear staining.



Immunofluorescence analysis of paraffin-embedded mouse eye using GNGT1 Rabbit pAb (A15675) at dilution of 1:100 (40x lens).
Secondary antibody: Cy3 Goat Anti-Rabbit IgG (H+L) (AS007) at 1:500 dilution. Blue: DAPI for nuclear staining.