

# HSL Rabbit pAb

Catalog No.: A15686 **10 Publications**

## Basic Information

### Observed MW

84kDa

### Calculated MW

117kDa

### Category

Primary antibody

### Applications

ELISA, WB

### Cross-Reactivity

Human, Mouse, Rat

## Background

The protein encoded by this gene has a long and a short form, generated by use of alternative translational start codons. The long form is expressed in steroidogenic tissues such as testis, where it converts cholesteryl esters to free cholesterol for steroid hormone production. The short form is expressed in adipose tissue, among others, where it hydrolyzes stored triglycerides to free fatty acids.

## Recommended Dilutions

WB 1:500 - 1:1000

## Immunogen Information

### Gene ID

3991

### Swiss Prot

Q05469

### Immunogen

A synthetic peptide corresponding to a sequence within amino acids 900-1000 of human LIPE (NP\_005348.2).

### Synonyms

HSL; LHS; REH; AOMS4; FPLD6

## Contact

 | 400-999-6126

 | [cn.market@abclonal.com.cn](mailto:cn.market@abclonal.com.cn)

 | [www.abclonal.com.cn](http://www.abclonal.com.cn)

## Product Information

### Source

Rabbit

### Isotype

IgG

### Purification

Affinity purification

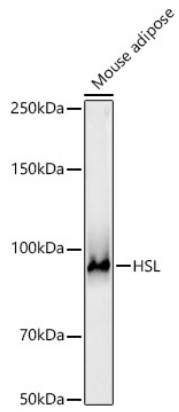
### Storage

Store at -20°C. Avoid freeze / thaw cycles.

Buffer: PBS with 0.05% proclin300, 50% glycerol, pH7.3.

## Validation Data

---



Western blot analysis of Mouse adipose, using HSL Rabbit pAb (A15686) at 1:1000 dilution.  
Secondary antibody: HRP Goat Anti-Rabbit IgG (H+L) (AS014) at 1:10000 dilution.  
Lysates/proteins: 25ug per lane.  
Blocking buffer: 3% nonfat dry milk in TBST.  
Detection: ECL Basic Kit (RM00020).  
Exposure time: 90s.