

# LTBP3 Rabbit pAb

Catalog No.: A15687 **1 Publications**

## Basic Information

### Observed MW

139kDa/260kDa

### Calculated MW

139kDa

### Category

Primary antibody

### Applications

WB,ELISA

### Cross-Reactivity

Rat

## Background

The protein encoded by this gene forms a complex with transforming growth factor beta (TGF-beta) proteins and may be involved in their subcellular localization. Activation of this complex requires removal of the encoded binding protein. This protein also may play a structural role in the extracellular matrix. Three transcript variants encoding different isoforms have been found for this gene.

## Recommended Dilutions

**WB** 1:500 - 1:2000

**ELISA** Recommended starting concentration is 1 µg/mL. Please optimize the concentration based on your specific assay requirements.

## Immunogen Information

### Gene ID

4054

### Swiss Prot

Q9NS15

### Immunogen

Recombinant fusion protein containing a sequence corresponding to amino acids 1004-1303 of human LTBP3 (NP\_001123616.1).

### Synonyms

DASS; LTBP2; LTBP-3; STHAG6; pp6425; GPHYS3; LTBP3

## Contact

 | 400-999-6126

 | [cn.market@abclonal.com.cn](mailto:cn.market@abclonal.com.cn)

 | [www.abclonal.com.cn](http://www.abclonal.com.cn)

## Product Information

### Source

Rabbit

### Isotype

IgG

### Purification

Affinity purification

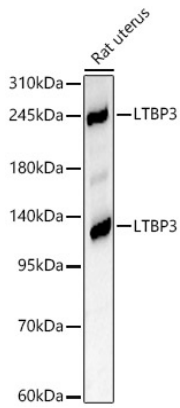
### Storage

Store at -20°C. Avoid freeze / thaw cycles.

Buffer: PBS with 0.05% proclin300,50% glycerol,pH7.3.

## Validation Data

---



Western blot analysis of lysates from Rat uterus, using LTBP3 Rabbit pAb (A15687) at 1:1000 dilution.  
Secondary antibody: HRP-conjugated Goat anti-Rabbit IgG (H+L) (AS014) at 1:10000 dilution.  
Lysates/proteins: 25µg per lane.  
Blocking buffer: 3% nonfat dry milk in TBST.  
Detection: ECL Basic Kit (RM00020).  
Exposure time: 45s.