

MAN2C1 Rabbit pAb

Catalog No.: A15688

Basic Information

Observed MW

128kDa

Calculated MW

116kDa

Category

Primary antibody

Applications

ELISA, WB

Cross-Reactivity

Mouse

Background

Predicted to enable alpha-mannosidase activity. Predicted to be involved in oligosaccharide catabolic process. Located in nucleoplasm.

Recommended Dilutions

WB 1:500 - 1:2000

Immunogen Information

Gene ID

4123

Swiss Prot

Q9NTJ4

Immunogen

Recombinant fusion protein containing a sequence corresponding to amino acids 1-300 of human MAN2C1 (NP_006706.2).

Synonyms

MANA; CDDG2; MANA1; MAN6A8; MAN2C1

Contact

☎ | 400-999-6126

✉ | cn.market@abclonal.com.cn

🌐 | www.abclonal.com.cn

Product Information

Source

Rabbit

Isotype

IgG

Purification

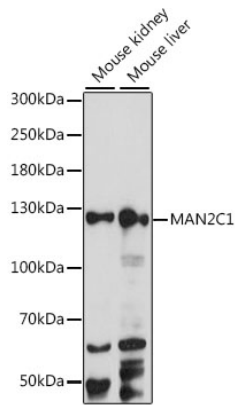
Affinity purification

Storage

Store at -20°C. Avoid freeze / thaw cycles.

Buffer: PBS with 0.01% thimerosal, 50% glycerol, pH7.3.

Validation Data



Western blot analysis of various lysates using MAN2C1 Rabbit pAb (A15688) at 1:1000 dilution.
Secondary antibody: HRP Goat Anti-Rabbit IgG (H+L) (AS014) at 1:10000 dilution.
Lysates/proteins: 25 μ g per lane.
Blocking buffer: 3% nonfat dry milk in TBST.
Detection: ECL Basic Kit (RM00020).
Exposure time: 30s.