

MMP14/MT1-MMP Rabbit pAb

Catalog No.: A15691

Basic Information

Observed MW

Calculated MW

66kDa

Category

Primary antibody

Applications

ELISA,IF/ICC

Cross-Reactivity

Human

Background

Proteins of the matrix metalloproteinase (MMP) family are involved in the breakdown of extracellular matrix in normal physiological processes, such as embryonic development, reproduction, and tissue remodeling, as well as in disease processes, such as arthritis and metastasis. Most MMP's are secreted as inactive proproteins which are activated when cleaved by extracellular proteinases. However, the protein encoded by this gene is a member of the membrane-type MMP (MT-MMP) subfamily; each member of this subfamily contains a potential transmembrane domain suggesting that these proteins are expressed at the cell surface rather than secreted. This protein activates MMP2 protein, and this activity may be involved in tumor invasion.

Recommended Dilutions

IF/ICC 1:50 - 1:200

Immunogen Information

Gene ID

4323

Swiss Prot

P50281


Immunogen

A synthetic peptide corresponding to a sequence within amino acids 75-174 of human MMP14/MT1-MMP (NP_004986.1).

Synonyms

MMP-14; MMP-X1; MT-MMP; MT1MMP; MTMMP1; WNCHRS; MT1-MMP; MT-MMP 1; MMP14/MT1-MMP

Contact

 | 400-999-6126

 | cn.market@abclonal.com.cn

 | www.abclonal.com.cn

Product Information

Source

Rabbit

Isotype

IgG

Purification

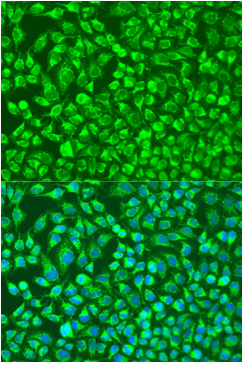
Affinity purification

Storage

Store at -20°C. Avoid freeze / thaw cycles.

Buffer: PBS with 0.02% sodium azide,50% glycerol,pH7.3.

Validation Data



Immunofluorescence analysis of U2OS cells using MMP14/MT1-MMPantibody (A15691) at dilution of 1:100. Blue: DAPI for nuclear staining.