

# IL6R Rabbit pAb

Catalog No.: A1570 **11 Publications**

## Basic Information

**Observed MW**

70-100kDa

**Calculated MW**

52kDa

**Category**

Primary antibody

**Applications**

WB,IHC-P,ELISA

**Cross-Reactivity**

Human, Mouse, Rat

## Background

This gene encodes a subunit of the interleukin 6 (IL6) receptor complex. Interleukin 6 is a potent pleiotropic cytokine that regulates cell growth and differentiation and plays an important role in the immune response. The IL6 receptor is a protein complex consisting of this protein and interleukin 6 signal transducer (IL6ST/GP130/IL6-beta), a receptor subunit also shared by many other cytokines. Dysregulated production of IL6 and this receptor are implicated in the pathogenesis of many diseases, such as multiple myeloma, autoimmune diseases and prostate cancer. Alternatively spliced transcript variants encoding distinct isoforms have been identified in this gene. A pseudogene of this gene is found on chromosome 9.

## Recommended Dilutions

**WB** 1:500 - 1:1000**IHC-P** 1:50 - 1:200**ELISA** Recommended starting concentration is 1 µg/mL. Please optimize the concentration based on your specific assay requirements.

## Immunogen Information

**Gene ID**

3570

**Swiss Prot**

P08887

**Immunogen**

Recombinant protein (or fragment). This information is considered to be commercially sensitive.

**Synonyms**

IL6Q; gp80; CD126; HIES5; IL-6R; IL6RA; IL6RQ; IL-1Ra; IL-6RA; IL6QTL; IL-6R-1; IL6R

## Contact

 | 400-999-6126 | [cn.market@abclonal.com.cn](mailto:cn.market@abclonal.com.cn) | [www.abclonal.com.cn](http://www.abclonal.com.cn)

## Product Information

**Source**

Rabbit

**Isotype**

IgG

**Purification**

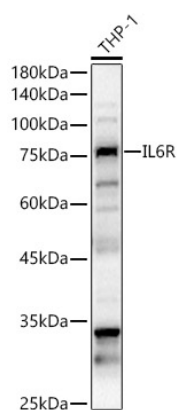
Affinity purification

**Storage**

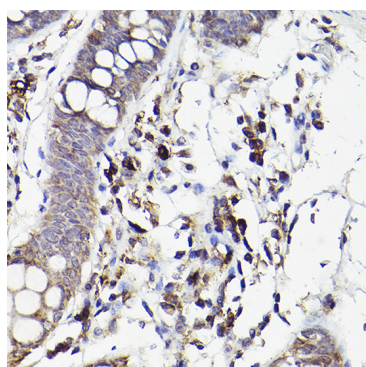
Store at -20°C. Avoid freeze / thaw cycles.

Buffer: PBS with 0.09% Sodium azide, 50% glycerol, pH7.3.

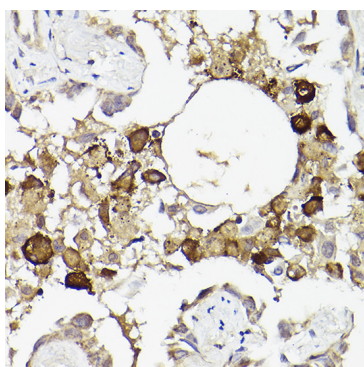
## Validation Data



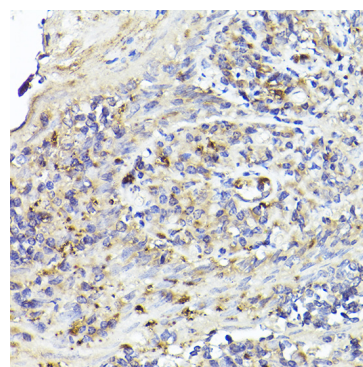
Western blot analysis of lysates from THP-1 cells using IL6R Rabbit pAb (A1570) at 1:1000 dilution.  
Secondary antibody: HRP-conjugated Goat anti-Rabbit IgG (H+L) (AS014) at 1:10000 dilution.  
Lysates/proteins: 25 µg per lane.  
Blocking buffer: 3% nonfat dry milk in TBST.  
Detection: ECL Basic Kit (RM00020).  
Exposure time: 10s.



Immunohistochemistry analysis of paraffin-embedded Human colon using IL6R Rabbit pAb (A1570) at dilution of 1:50 (40x lens). High pressure antigen retrieval performed with 0.01M Citrate buffer (pH 6.0) prior to IHC staining.



Immunohistochemistry analysis of paraffin-embedded Human lung cancer using IL6R Rabbit pAb (A1570) at dilution of 1:50 (40x lens). High pressure antigen retrieval performed with 0.01M Citrate buffer (pH 6.0) prior to IHC staining.



Immunohistochemistry analysis of paraffin-embedded Human tonsil using IL6R Rabbit pAb (A1570) at dilution of 1:50 (40x lens). High pressure antigen retrieval performed with 0.01M Citrate buffer (pH 6.0) prior to IHC staining.