

PKA C-beta (PRKACB) Rabbit pAb

Catalog No.: A15709

Basic Information

Observed MW

50kDa

Calculated MW

41kDa

Category

Primary antibody

Applications

ELISA, WB

Cross-Reactivity

Mouse, Rat

Background

The protein encoded by this gene is a member of the serine/threonine protein kinase family. The encoded protein is a catalytic subunit of cAMP (cyclic AMP)-dependent protein kinase, which mediates signalling through cAMP. cAMP signaling is important to a number of processes, including cell proliferation and differentiation. Multiple alternatively spliced transcript variants encoding distinct isoforms have been observed.

Recommended Dilutions

WB 1:500 - 1:2000

Immunogen Information

Gene ID

5567

Swiss Prot

P22694

Immunogen

Recombinant fusion protein containing a sequence corresponding to amino acids 1-351 of human PKA C-beta (PRKACB) (NP_002722.1).

Synonyms

CAFD2; PKACB; PKA C-beta; PKA C-beta (PRKACB)

Contact

 | 400-999-6126

 | cn.market@abclonal.com.cn

 | www.abclonal.com.cn

Product Information

Source

Rabbit

Isotype

IgG

Purification

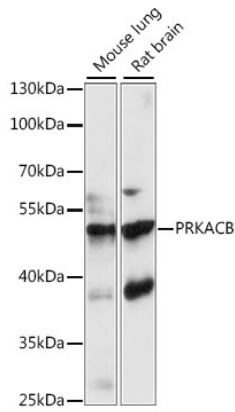
Affinity purification

Storage

Store at -20°C. Avoid freeze / thaw cycles.

Buffer: PBS with 0.01% thimerosal, 50% glycerol, pH 7.3.

Validation Data



Western blot analysis of various lysates using PKA C-beta (PRKACB) Rabbit pAb (A15709) at 1:1000 dilution.

Secondary antibody: HRP Goat Anti-Rabbit IgG (H+L) (AS014) at 1:10000 dilution.

Lysates/proteins: 25µg per lane.

Blocking buffer: 3% nonfat dry milk in TBST.

Detection: ECL Basic Kit (RM00020).

Exposure time: 90s.