

RPL36A Rabbit pAb

Catalog No.: A15717

Basic Information

Observed MW

12kDa

Calculated MW

12kDa

Category

Primary antibody

Applications

ELISA,WB

Cross-Reactivity

Human

Background

Cytoplasmic ribosomes, organelles that catalyze protein synthesis, consist of a small 40S subunit and a large 60S subunit. Together these subunits are composed of 4 RNA species and approximately 80 structurally distinct proteins. This gene encodes a ribosomal protein that is a component of the 60S subunit. The protein, which shares sequence similarity with yeast ribosomal protein L44, belongs to the L44E (L36AE) family of ribosomal proteins. Although this gene has been referred to as ribosomal protein L44 (RPL44), its official name is ribosomal protein L36a (RPL36A). This gene and the human gene officially named ribosomal protein L36a-like (RPL36AL) encode nearly identical proteins; however, they are distinct genes. As is typical for genes encoding ribosomal proteins, there are multiple processed pseudogenes of this gene dispersed through the genome. Naturally occurring read-through transcription occurs between this locus and the heterogeneous nuclear ribonucleoprotein H2 (H') gene.

Recommended Dilutions

WB 1:500 - 1:2000

Immunogen Information

Gene ID

6173

Swiss Prot

P83881

Immunogen

Recombinant fusion protein containing a sequence corresponding to amino acids 37-142 of human RPL36A (NP_066357.2).

Synonyms

L36A; L44L; MIG6; eL42; RPL44; RPL36A

Contact

 | 400-999-6126 | cn.market@abclonal.com.cn | www.abclonal.com.cn

Product Information

Source

Rabbit

Isotype

IgG

Purification

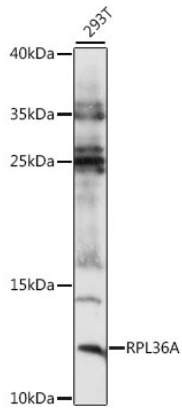
Affinity purification

Storage

Store at -20°C. Avoid freeze / thaw cycles.

Buffer: PBS with 0.01% thimerosal, 50% glycerol, pH7.3.

Validation Data



Western blot analysis of lysates from 293T cells, using RPL36A Rabbit pAb (A15717) at 1:1000 dilution.
Secondary antibody: HRP Goat Anti-Rabbit IgG (H+L) (AS014) at 1:10000 dilution.
Lysates/proteins: 25µg per lane.
Blocking buffer: 3% nonfat dry milk in TBST.
Detection: ECL Basic Kit (RM00020).
Exposure time: 1s.