

SNAPC1 Rabbit pAb

Catalog No.: A15725

Basic Information

Observed MW

50-55kDa

Calculated MW

43kDa

Category

Primary antibody

Applications

ELISA, WB

Cross-Reactivity

Human, Mouse, Rat

Background

Predicted to enable sequence-specific DNA binding activity. Predicted to be involved in snRNA transcription by RNA polymerase II and snRNA transcription by RNA polymerase III. Located in nucleolus and nucleoplasm.

Recommended Dilutions

WB 1:500 - 1:2000

Immunogen Information

Gene ID

6617

Swiss Prot

Q16533

Immunogen

Recombinant fusion protein containing a sequence corresponding to amino acids 1-368 of human SNAPC1 (NP_003073.1).

Synonyms

SNAP43; PTFgamma; SNAPC1

Contact

☎ | 400-999-6126

✉ | cn.market@abclonal.com.cn

🌐 | www.abclonal.com.cn

Product Information

Source

Rabbit

Isotype

IgG

Purification

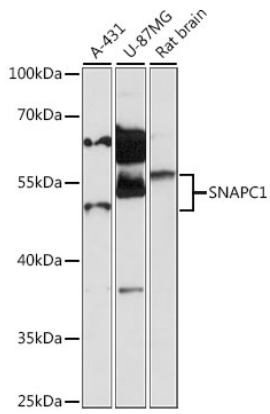
Affinity purification

Storage

Store at -20°C. Avoid freeze / thaw cycles.

Buffer: PBS with 0.01% thimerosal, 50% glycerol, pH7.3.

Validation Data



Western blot analysis of various lysates using SNAPC1 Rabbit pAb (A15725) at 1:1000 dilution.
Secondary antibody: HRP Goat Anti-Rabbit IgG (H+L) (AS014) at 1:10000 dilution.
Lysates/proteins: 25µg per lane.
Blocking buffer: 3% nonfat dry milk in TBST.
Detection: ECL Enhanced Kit (RM00021).
Exposure time: 90s.