

# SNRPN Rabbit pAb

Catalog No.: A15726

## Basic Information

### Observed MW

20kDa

### Calculated MW

25kDa

### Category

Primary antibody

### Applications

ELISA, WB

### Cross-Reactivity

Human, Mouse, Rat

## Background

This gene is located within the Prader-Willi Syndrome critical region on chromosome 15 and is imprinted and expressed from the paternal allele. It encodes a component of the small nuclear ribonucleoprotein complex, which functions in pre-mRNA processing and may contribute to tissue-specific alternative splicing. Alternative promoter use and alternative splicing result in a multitude of transcript variants encoding the same protein. Transcript variants that initiate at the CpG island-associated imprinting center may be bicistronic and also encode the SNRPN upstream reading frame protein (SNURF) from an upstream open reading frame. In addition, long spliced transcripts for small nucleolar RNA host gene 14 (SNHG14) may originate from the promoters at this locus and share exons with this gene. Alterations in this region are associated with parental imprint switch failure, which may cause Angelman syndrome or Prader-Willi syndrome.

## Recommended Dilutions

WB 1:500 - 1:2000

## Immunogen Information

### Gene ID

6638

### Swiss Prot

P63162

### Immunogen

A synthetic peptide corresponding to a sequence within amino acids 1-100 of human SNRPN (NP\_003088.1).

### Synonyms

SMN; PWCR; SM-D; sm-N; RT-LI; HCERN3; SNRNP-N; SNURF-SNRPN; SNRPN

## Contact

☎ | 400-999-6126

✉ | [cn.market@abclonal.com.cn](mailto:cn.market@abclonal.com.cn)

🌐 | [www.abclonal.com.cn](http://www.abclonal.com.cn)

## Product Information

### Source

Rabbit

### Isotype

IgG

### Purification

Affinity purification

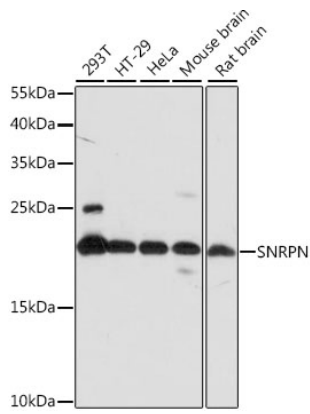
### Storage

Store at -20°C. Avoid freeze / thaw cycles.

Buffer: PBS with 0.01% thimerosal, 50% glycerol, pH7.3.

## Validation Data

---



Western blot analysis of various lysates using SNRPN Rabbit pAb (A15726) at 1:1000 dilution.  
Secondary antibody: HRP Goat Anti-Rabbit IgG (H+L) (AS014) at 1:10000 dilution.  
Lysates/proteins: 25µg per lane.  
Blocking buffer: 3% nonfat dry milk in TBST.  
Detection: ECL Basic Kit (RM00020).  
Exposure time: 1s.