

Alpha-2-Macroglobulin (A2M) Rabbit pAb

Catalog No.: A1573

3 Publications

Basic Information

Observed MW

163kDa

Calculated MW

163kDa

Category

Primary antibody

Applications

ELISA, WB

Cross-Reactivity

Human, Mouse, Rat

Background

The protein encoded by this gene is a protease inhibitor and cytokine transporter. It uses a bait-and-trap mechanism to inhibit a broad spectrum of proteases, including trypsin, thrombin and collagenase. It can also inhibit inflammatory cytokines, and it thus disrupts inflammatory cascades. Mutations in this gene are a cause of alpha-2-macroglobulin deficiency. This gene is implicated in Alzheimer's disease (AD) due to its ability to mediate the clearance and degradation of A-beta, the major component of beta-amyloid deposits. A related pseudogene, which is also located on the p arm of chromosome 12, has been identified.

Recommended Dilutions

WB 1:500 - 1:1000

Immunogen Information

Gene ID

2

Swiss Prot

P01023

Immunogen

Recombinant fusion protein containing a sequence corresponding to amino acids 1155-1474 of human Alpha-2-Macroglobulin (Alpha-2-Macroglobulin (A2M)) (NP_000005.2).

Synonyms

A2MD; CPAMD5; FWP007; S863-7; Alpha-2-Macroglobulin (A2M)

Contact

 | 400-999-6126 | cn.market@abclonal.com.cn | www.abclonal.com.cn

Product Information

Source

Rabbit

Isotype

IgG

Purification

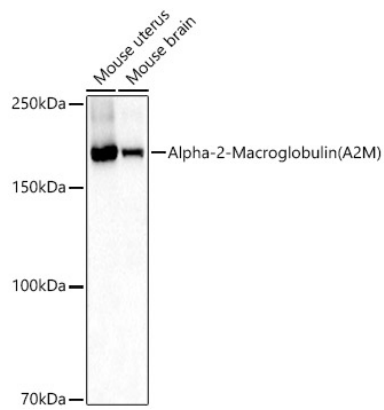
Affinity purification

Storage

Store at -20°C. Avoid freeze / thaw cycles.

Buffer: PBS with 0.01% thimerosal, 50% glycerol, pH7.3.

Validation Data



Western blot analysis of various lysates, using Alpha-2-Macroglobulin(A2M) antibody (A1573) at 1:1000 dilution.

Secondary antibody: HRP Goat Anti-Rabbit IgG (H+L) (AS014) at 1:10000 dilution.

Lysates/proteins: 25µg per lane.

Blocking buffer: 3% nonfat dry milk in TBST.

Detection: ECL Basic Kit (RM00020).

Exposure time: 30s.