

# SERPINC1 Rabbit pAb

Catalog No.: A1574

## Basic Information

### Observed MW

58kDa

### Calculated MW

58kDa

### Category

Primary antibody

### Applications

ELISA, WB

### Cross-Reactivity

Human, Mouse, Rat

## Background

The protein encoded by this gene, antithrombin III, is a plasma protease inhibitor and a member of the serpin superfamily. This protein inhibits thrombin as well as other activated serine proteases of the coagulation system, and it regulates the blood coagulation cascade. The protein includes two functional domains: the heparin binding-domain at the N-terminus of the mature protein, and the reactive site domain at the C-terminus. The inhibitory activity is enhanced by the presence of heparin. Numerous mutations have been identified for this gene, many of which are known to cause antithrombin-III deficiency which constitutes a strong risk factor for thrombosis. A reduction in the serum level of this protein is associated with severe cases of Coronavirus Disease 19 (COVID-19).

## Recommended Dilutions

WB 1:100 - 1:500

## Immunogen Information

### Gene ID

462

### Swiss Prot

P01008

### Immunogen

Recombinant fusion protein containing a sequence corresponding to amino acids 33-259 of human SERPINC1 (NP\_000479.1).

### Synonyms

AT3; AT3D; ATIII; THPH7; ATIII-R2; ATIII-T1; ATIII-T2; SERPINC1

## Contact

 | 400-999-6126

 | [cn.market@abclonal.com.cn](mailto:cn.market@abclonal.com.cn)

 | [www.abclonal.com.cn](http://www.abclonal.com.cn)

## Product Information

### Source

Rabbit

### Isotype

IgG

### Purification

Affinity purification

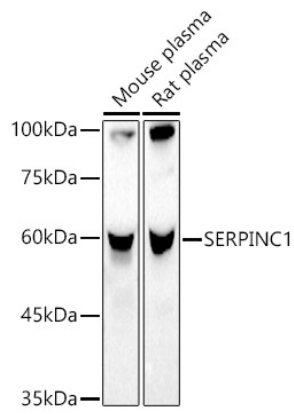
### Storage

Store at -20°C. Avoid freeze / thaw cycles.

Buffer: PBS with 0.05% proclin300, 50% glycerol, pH7.3.

## Validation Data

---



Western blot analysis of extracts of various cell lines, using SERPINC1 antibody (A1574) at 1:500 dilution.  
Secondary antibody: HRP Goat Anti-Rabbit IgG (H+L) (AS014) at 1:10000 dilution.  
Lysates/proteins: 25µg per lane.  
Blocking buffer: 3% nonfat dry milk in TBST.  
Detection: ECL Basic Kit (RM00020).  
Exposure time: 60s.