

SKAP2 Rabbit pAb

Catalog No.: A15750

Basic Information

Observed MW

45kDa

Calculated MW

41kDa

Category

Primary antibody

Applications

ELISA,WB,IF/ICC

Cross-Reactivity

Human, Mouse, Rat

Background

The protein encoded by this gene shares homology with Src kinase-associated phosphoprotein 1, and is a substrate of Src family kinases. It is an adaptor protein that is thought to play an essential role in the Src signaling pathway, and in regulating proper activation of the immune system. This protein contains an amino terminal coiled-coil domain for self-dimerization, a pleckstrin homology (PH) domain required for interactions with lipids at the membrane, and a Src homology (SH3) domain at the carboxy terminus. Some reports indicate that this protein inhibits actin polymerization through interactions with actin assembly factors, and might negatively regulate the invasiveness of tumors by modulating actin assembly. Alternative splicing results in multiple transcript variants encoding different isoforms.

Recommended Dilutions

WB 1:500 - 1:2000**IF/ICC** 1:50 - 1:200

Immunogen Information

Gene ID

8935

Swiss Prot

O75563

Immunogen

Recombinant fusion protein containing a sequence corresponding to amino acids 1-120 of human SKAP2 (NP_003921.2).

Synonyms

PRAP; RA70; SAPS; SCAP2; SKAP55R; SKAP-HOM; SKAP2

Contact

 | 400-999-6126 | cn.market@abclonal.com.cn | www.abclonal.com.cn

Product Information

Source

Rabbit

Isotype

IgG

Purification

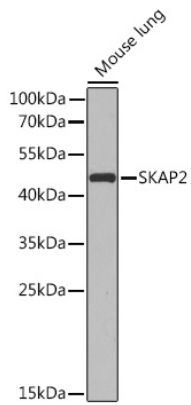
Affinity purification

Storage

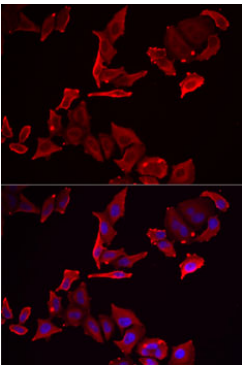
Store at -20°C. Avoid freeze / thaw cycles.

Buffer: PBS with 0.02% sodium azide,50% glycerol,pH7.3.

Validation Data



Western blot analysis of extracts of Mouse lung, using SKAP2 Rabbit pAb (A15750) at 1:1000 dilution.
Secondary antibody: HRP Goat Anti-Rabbit IgG (H+L) (AS014) at 1:10000 dilution.
Lysates/proteins: 25µg per lane.
Blocking buffer: 3% nonfat dry milk in TBST.
Detection: ECL Basic Kit (RM00020).
Exposure time: 30s.



Immunofluorescence analysis of MCF7 cells using SKAP2 antibody (A15750). Blue: DAPI for nuclear staining.