

METAP1 Rabbit pAb

Catalog No.: A15796

Basic Information

Observed MW

48kDa

Calculated MW

43kDa

Category

Primary antibody

Applications

ELISA, WB

Cross-Reactivity

Mouse, Rat

Background

Predicted to enable aminopeptidase activity and metalloexopeptidase activity. Involved in platelet aggregation. Predicted to be located in cytosol.

Recommended Dilutions

WB 1:500 - 1:2000

Immunogen Information

Gene ID

23173

Swiss Prot

P53582

Immunogen

Recombinant fusion protein containing a sequence corresponding to amino acids 177-386 of human METAP1 (NP_055958.2).

Synonyms

MAP1A; MetAP1A; METAP1

Contact

☎ | 400-999-6126

✉ | cn.market@abclonal.com.cn

🌐 | www.abclonal.com.cn

Product Information

Source

Rabbit

Isotype

IgG

Purification

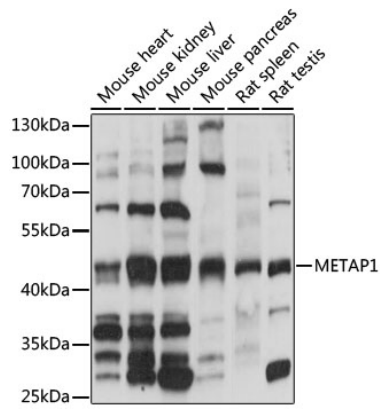
Affinity purification

Storage

Store at -20°C. Avoid freeze / thaw cycles.

Buffer: PBS with 0.01% thimerosal, 50% glycerol, pH7.3.

Validation Data



Western blot analysis of various lysates using METAP1 Rabbit pAb (A15796) at 1:1000 dilution.
Secondary antibody: HRP Goat Anti-Rabbit IgG (H+L) (AS014) at 1:10000 dilution.
Lysates/proteins: 25µg per lane.
Blocking buffer: 3% nonfat dry milk in TBST.
Detection: ECL Basic Kit (RM00020).
Exposure time: 1s.